

For Research Use Only

# CoraLite® Plus 488-conjugated DYNC1H1 Polyclonal antibody

Catalog Number: CL488-12345

Featured Product



## Basic Information

Catalog Number:

CL488-12345

Size:

100ul , Concentration: 1000 ug/ml by  
Nanodrop;

Source:

Rabbit

Isotype:

IgG

Immunogen Catalog Number:

AG2999

GenBank Accession Number:

BC021297

GeneID (NCBI):

1778

UNIPROT ID:

Q14204

Full Name:

dynein, cytoplasmic 1, heavy chain 1

Calculated MW:

4646 aa, 532 kDa

Observed MW:

532 kDa

Purification Method:

Antigen affinity purification

Recommended Dilutions:

IF/ICC 1:50-1:500

Excitation/Emission maxima  
wavelengths:

493 nm / 522 nm

## Applications

Tested Applications:

IF/ICC

Species Specificity:

human, rat, zebrafish, mouse

Positive Controls:

IF/ICC : MCF-7 cells,

## Background Information

Dyneins are a group of microtubule-activated ATPases that serve to convert chemical energy into mechanical energy. It can be divided into 2 large subgroups, namely, the axonemal and cytoplasmic dyneins. The conventional cytoplasmic dynein are comprised of 2 heavy chain polypeptides and a number of intermediate and light chains. DYNC1H1 is a cytoplasmic dynein and belongs to the dynein heavy chain family. It acts as a motor for the intracellular retrograde motility of vesicles and organelles along microtubules. DYNC1H1 has been implicated in the degeneration of dopaminergic neuron axons and motor neurons in PD patients..

## Storage

Storage:

Store at -20°C. Avoid exposure to light. Stable for one year after shipment.

Storage Buffer:

PBS with 50% Glycerol, 0.05% Proclin300, 0.5% BSA, pH 7.3.

Aliquoting is unnecessary for -20°C storage

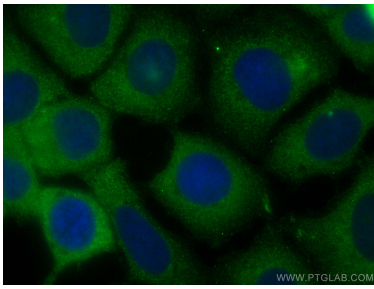
For technical support and original validation data for this product please contact:

T: 1 (888) 4PTGLAB (1-888-478-4522) (toll free  
in USA), or 1(312) 455-8498 (outside USA)

E: [proteintech@ptglab.com](mailto:proteintech@ptglab.com)  
W: [ptglab.com](http://ptglab.com)

This product is exclusively available under Proteintech Group brand and is not available to purchase from any other manufacturer.

## Selected Validation Data



Immunofluorescent analysis of (-20°C Methanol) fixed MCF-7 cells using CoraLite® Plus 488 DYNC1H1 antibody (CL488-12345) at dilution of 1:200.