

For Research Use Only

CoraLite® Plus 488-conjugated MAGEB1 Polyclonal antibody

Catalog Number:CL488-12400



Basic Information

Catalog Number:	GenBank Accession Number:	Purification Method:
CL488-12400	BC013772	Antigen affinity purification
Size:	GeneID (NCBI):	Recommended Dilutions:
100ul , Concentration: 1000 ug/ml by Nanodrop;	4112	IF/ICC 1:50-1:500
Source:	UNIPROT ID:	Excitation/Emission maxima wavelengths:
Rabbit	P43366	493 nm / 522 nm
Isotype:	Full Name:	
IgG	melanoma antigen family B, 1	
Immunogen Catalog Number:	Calculated MW:	
AG3094	347 aa, 39 kDa	
	Observed MW:	
	43-45 kDa	

Applications

Tested Applications:	Positive Controls:
IF/ICC, FC (Intra)	IF/ICC : HepG2 cells,
Species Specificity:	
human	

Background Information

MAGEB1, also named as MAGEL1, MAGEXP, DAM10 and CT3.1, is a member of the MAGEB gene family. MAGE genes encode for tumor-rejection antigens and are expressed in tumors of different histologic types and Testis/placenta, but not in other normal tissues. The MW of MAGEB1 is about 40-45kd.

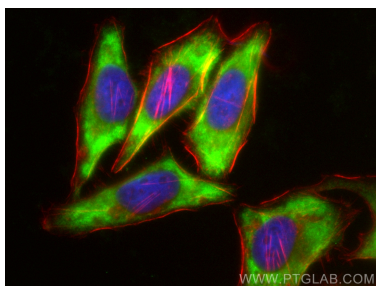
Storage

Storage:
Store at -20°C. Avoid exposure to light. Stable for one year after shipment.
Storage Buffer:
PBS with 50% Glycerol, 0.05% Proclin300, 0.5% BSA, pH 7.3.
Aliquoting is unnecessary for -20°C storage

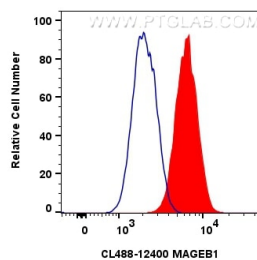
For technical support and original validation data for this product please contact:
T: 1 (888) 4PTGLAB (1-888-478-4522) (toll free in USA), or 1(312) 455-8498 (outside USA)
E: proteintech@ptglab.com
W: ptglab.com

This product is exclusively available under Proteintech Group brand and is not available to purchase from any other manufacturer.

Selected Validation Data



Immunofluorescent analysis of (-20°C Ethanol) fixed HepG2 cells using Coralite® Plus 488 MAGEB1 antibody (CL488-12400) at dilution of 1:200, CL594-Phalloidin (red).



1x10⁶ HepG2 cells were intracellularly stained with 0.8 ug Coralite® Plus 488 Mageb1 Polyclonal Antibody (CL488-12400)(red), or 0.8 ug Coralite® Plus 488-conjugated Rabbit IgG control Rabbit PolyAb (CL488-30000) (blue). Cells were fixed with 4% PFA and permeabilized with Flow Cytometry Perm Buffer (PF00011-C).