

For Research Use Only

CoraLite® Plus 488-conjugated HOMER1 Polyclonal antibody



Catalog Number: CL488-12433

Featured Product

Basic Information

Catalog Number: CL488-12433	GenBank Accession Number: BC015502	Purification Method: Antigen affinity purification
Size: 100ul , Concentration: 1000 µg/ml by Nanodrop;	GeneID (NCBI): 9456	Recommended Dilutions: IF 1:50-1:500
Source: Rabbit	Full Name: homer homolog 1 (Drosophila)	Excitation/Emission maxima wavelengths: 493 nm / 522 nm
Isotype: IgG	Calculated MW: 40 kDa	
Immunogen Catalog Number: AG3109	Observed MW: 46-48 kDa	

Applications

Tested Applications: FC, IF	Positive Controls: IF : PC-12 cells,
Species Specificity: human, mouse, rat	

Background Information

Human HOMER1, also named as SYN47, belongs to the Homer family. Human HOMER1 has some isoforms: HOMER1a, HOMER1b, HOMER1c, HOMER1e and HOMER1h. Mouse Homer1 also named as Vesl-1 and it has some isoforms: Vesl-1l, Vesl-1m, Vesl-1s, Homer1b, and Homer1d. HOMER1 is a postsynaptic density scaffolding protein. It is a neuronal immediate-early gene (IEG) that is enriched at excitatory synapses and binds mGluRs. In WB, the MW of HOMER1 is about 46-50kd, 40-43kd and 20-26kd.

Storage

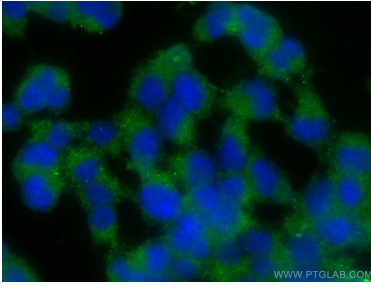
Storage:
Store at -20°C. Avoid exposure to light. Stable for one year after shipment.
Storage Buffer:
PBS with 50% Glycerol, 0.05% Proclin300, 0.5% BSA, pH 7.3.
Aliquoting is unnecessary for -20°C storage

*** 20ul sizes contain 0.1% BSA

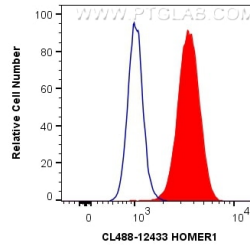
For technical support and original validation data for this product please contact:
T: 1 (888) 4PTGLAB (1-888-478-4522) (toll free in USA), or 1(312) 455-8498 (outside USA)
E: proteintech@ptglab.com
W: ptglab.com

This product is exclusively available under Proteintech Group brand and is not available to purchase from any other manufacturer.

Selected Validation Data



Immunofluorescent analysis of (-20°C Ethanol) fixed PC-12 cells using CoralLite® Plus 488 HOMER1 antibody (CL488-12433) at dilution of 1:200.



1X10⁶ SH-SY5Y cells were intracellularly stained with 0.8 ug CoralLite® Plus 488 Anti-Human HOMER1 (CL488-12433) (red), or 0.8 ug Isotype Control. Cells were fixed with 4% PFA and permeabilized with Flow Cytometry Perm Buffer (PF00011-C).