

For Research Use Only

CoraLite® Plus 488-conjugated SLP76 Polyclonal antibody



Catalog Number: **CL488-12728**

Basic Information

Catalog Number: CL488-12728	GenBank Accession Number: BC016618	Purification Method: Antigen affinity purification
Size: 100ul , Concentration: 1000 µg/ml by Nanodrop;	GeneID (NCBI): 3937	Excitation/Emission maxima wavelengths: 493 nm / 522 nm
Source: Rabbit	Full Name: lymphocyte cytosolic protein 2 (SH2 domain containing leukocyte protein of 76kDa)	
Isotype: IgG	Calculated MW: 533 aa, 60 kDa	
Immunogen Catalog Number: AG3432	Observed MW: 70-76 kDa	

Applications

Tested Applications:
FC (Intra)

Species Specificity:
human, mouse, rat

Background Information

Storage

Storage:
Store at -20°C. Avoid exposure to light. Stable for one year after shipment.

Storage Buffer:
PBS with 50% Glycerol, 0.05% Proclin300, 0.5% BSA, pH 7.3.

Aliquoting is unnecessary for -20°C storage

***** 20ul sizes contain 0.1% BSA**

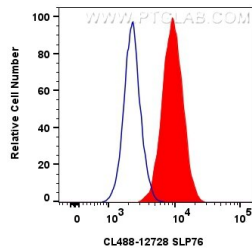
For technical support and original validation data for this product please contact:

T: 1 (888) 4PTGLAB (1-888-478-4522) (toll free
in USA), or 1(312) 455-8498 (outside USA)

E: proteintech@ptglab.com
W: ptglab.com

**This product is exclusively available under Proteintech
Group brand and is not available to purchase from any
other manufacturer.**

Selected Validation Data



1x10⁶ Jurkat cells were intracellularly stained with 0.8 ug CoraLite® Plus 488 Anti-Human SLP76 (CL488-12728) (red), or 0.8 ug CoraLite® Plus 488-conjugated Rabbit IgG control Rabbit PolyAb (CL488-30000, Clone:) (blue). Cells were fixed with 4% PFA and permeabilized with Flow Cytometry Perm Buffer (PF00011-C).