

For Research Use Only

CoraLite® Plus 488-conjugated BACE1 Polyclonal antibody

Catalog Number: CL488-12807

Featured Product



Basic Information

Catalog Number:

CL488-12807

Size:

100ul, Concentration: 1000 ug/ml by Nanodrop;

Source:

Rabbit

Isotype:

IgG

Immunogen Catalog Number:

AG3559

GenBank Accession Number:

BC036084

GeneID (NCBI):

23621

UNIPROT ID:

P56817

Full Name:

beta-site APP-cleaving enzyme 1

Calculated MW:

501 aa, 56 kDa

Observed MW:

70-75 kDa, 42-56 kDa

Purification Method:

Antigen affinity purification

Recommended Dilutions:

IF/ICC 1:50-1:500

Excitation/Emission maxima wavelengths:

493 nm / 522 nm

Applications

Tested Applications:

IF/ICC

Species Specificity:

human, mouse, zebrafish, rat

Positive Controls:

IF/ICC : Neuro-2a cells,

Background Information

beta-secretase, encoded by BACE1(beta-site amyloid beta A4 precursor protein-cleaving enzyme1) gene, is a neuron-specific membrane-associated protease that participate in the two step proteolytic processing of the APP. Cleaves at the N-terminus of the A-beta peptide sequence, between residues 671 and 672 of APP, leads to the generation and extracellular release of beta-cleaved soluble APP, and a corresponding cell-associated C-terminal fragment which is later released by gamma-secretase. It has a high expression in the brain and pancreas. This protein has 6 isoforms produced by alternative splicing. BACE1 can be detected with different molecular weight: 42-56kD (prozymogen and isoforms), 65-75 (glycosylated forms) and 160kDa (dimer) (PMID:22741101; 21795680).

Storage

Storage:

Store at -20°C. Avoid exposure to light. Stable for one year after shipment.

Storage Buffer:

PBS with 50% Glycerol, 0.05% Proclin300, 0.5% BSA, pH 7.3.

Aliquoting is unnecessary for -20°C storage

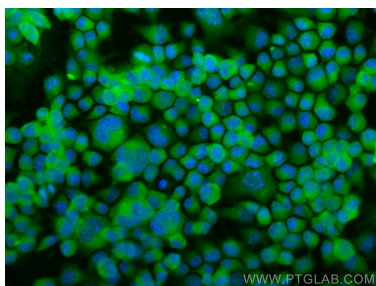
For technical support and original validation data for this product please contact:

T: 1 (888) 4PTGLAB (1-888-478-4522) (toll free in USA), or 1(312) 455-8498 (outside USA)

E: proteintech@ptglab.com
W: ptglab.com

This product is exclusively available under Proteintech Group brand and is not available to purchase from any other manufacturer.

Selected Validation Data



Immunofluorescent analysis of (4% PFA) fixed Neuro-2a cells using CoraLite® Plus 488 BACE1 antibody (CL488-12807) at dilution of 1:100.