

For Research Use Only

# CoraLite® Plus 488-conjugated Neuropeptide Y Polyclonal antibody



Catalog Number: CL488-12833

## Basic Information

<b>Catalog Number:</b> CL488-12833	<b>GenBank Accession Number:</b> BC029497	<b>Purification Method:</b> Antigen affinity purification
<b>Size:</b> 100ul , Concentration: 1000 µg/ml by Nanodrop;	<b>GeneID (NCBI):</b> 4852	<b>Recommended Dilutions:</b> IF 1:50-1:500
<b>Source:</b> Rabbit	<b>Full Name:</b> neuropeptide Y	<b>Excitation/Emission maxima wavelengths:</b> 493 nm / 522 nm
<b>Isotype:</b> IgG	<b>Calculated MW:</b> 97 aa, 11 kDa	
<b>Immunogen Catalog Number:</b> AG3568		

## Applications

<b>Tested Applications:</b> IF	<b>Positive Controls:</b> IF : mouse eye tissue,
<b>Species Specificity:</b> human, mouse, rat	

## Background Information

Neuropeptide Y (NPY) is one of the most abundant peptides in the mammalian central nervous system (CNS). NPY has been linked to several physiological and pathological functions, such as feeding behaviour, memory processing, pain, anxiety, cell proliferation and many other processes in the central and peripheral nervous systems. The neuropeptide functions through G protein-coupled receptors to inhibit adenylyl cyclase, activate mitogen-activated protein kinase (MAPK), regulate intracellular calcium levels, and activate potassium channels. In addition, NPY was suggested as a potential neuroprotective agent in Alzheimer's disease by counteracting the toxic effect of  $\beta$ -amyloid in an in vitro model.

## Storage

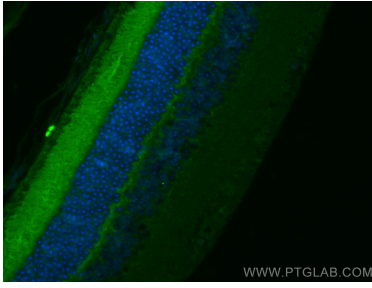
**Storage:**  
Store at -20°C. Avoid exposure to light. Stable for one year after shipment.  
**Storage Buffer:**  
PBS with 50% Glycerol, 0.05% Proclin300, 0.5% BSA, pH 7.3.  
Aliquoting is unnecessary for -20°C storage

\*\*\* 20ul sizes contain 0.1% BSA

For technical support and original validation data for this product please contact:  
T: 1 (888) 4PTGLAB (1-888-478-4522) (toll free in USA), or 1(312) 455-8498 (outside USA)  
E: proteintech@ptglab.com  
W: ptglab.com

This product is exclusively available under Proteintech Group brand and is not available to purchase from any other manufacturer.

## Selected Validation Data



Immunofluorescent analysis of (4% PFA) fixed mouse eye tissue using CoraLite® Plus 488 Neuropeptide Y antibody (CL488-12833) at dilution of 1:200.