

For Research Use Only

CoraLite® Plus 488-conjugated PDE4D Polyclonal antibody



Catalog Number: CL488-12918

Featured Product

Basic Information

Catalog Number: CL488-12918	GenBank Accession Number: BC036319	Purification Method: Antigen affinity purification
Size: 100ul , Concentration: 1000 µg/ml by Nanodrop;	GeneID (NCBI): 5144	Recommended Dilutions: IF 1:50-1:500
Source: Rabbit	Full Name: phosphodiesterase 4D, cAMP-specific (phosphodiesterase E3 dunce homolog, Drosophila)	Excitation/Emission maxima wavelengths: 493 nm / 522 nm
Isotype: IgG	Calculated MW: 809 aa, 91 kDa	
Immunogen Catalog Number: AG3588	Observed MW: 91 kDa	

Applications

Tested Applications: IF	Positive Controls: IF : HeLa cells,
Species Specificity: human, mouse, rat	

Background Information

PDE4D(cAMP-specific 3',5'-cyclic phosphodiesterase 4D) is also named as DPDE3, PDE43 and belongs to the cyclic nucleotide phosphodiesterase family and PDE4 subfamily. PDE4D subtype may be of particular importance as an antidepressant target in that it is regulated by repeated treatment with both norepinephrine and serotonin reuptake inhibitors as well as by the PDE4 inhibitor rolipram(PMID:16730340). It has some isoforms and all the PDE4D isoforms are expressed in healthy adult human hippocampus and in hippocampus from a patient with advanced Alzheimer disease(PMID:17353396).

Storage

Storage:
Store at -20°C. Avoid exposure to light. Stable for one year after shipment.
Storage Buffer:
PBS with 50% Glycerol, 0.05% Proclin300, 0.5% BSA, pH 7.3.
Aliquoting is unnecessary for -20°C storage

*** 20ul sizes contain 0.1% BSA

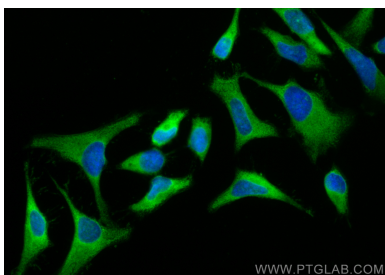
For technical support and original validation data for this product please contact:

T: 1 (888) 4PTGLAB (1-888-478-4522) (toll free
in USA), or 1(312) 455-8498 (outside USA)

E: proteintech@ptglab.com
W: ptglab.com

This product is exclusively available under Proteintech Group brand and is not available to purchase from any other manufacturer.

Selected Validation Data



Immunofluorescent analysis of (-20°C Methanol) fixed HeLa cells using CoraLite® Plus 488 PDE4D antibody (CL488-12918) at dilution of 1:200.