

For Research Use Only

# CoraLite® Plus 488-conjugated NF-L Polyclonal antibody



Catalog Number: CL488-12998

## Basic Information

<b>Catalog Number:</b> CL488-12998	<b>GenBank Accession Number:</b> BC039237	<b>Purification Method:</b> Antigen affinity purification
<b>Size:</b> 100ul , Concentration: 1000 µg/ml by Nanodrop;	<b>GeneID (NCBI):</b> 4747	<b>Recommended Dilutions:</b> IF 1:50-1:500
<b>Source:</b> Rabbit	<b>Full Name:</b> neurofilament, light polypeptide	<b>Excitation/Emission maximum wavelengths:</b> 493 nm / 522 nm
<b>Isotype:</b> IgG	<b>Calculated MW:</b> 543 aa, 62 kDa	
<b>Immunogen Catalog Number:</b> AG3667	<b>Observed MW:</b> 65-68 kDa, 140-160 kDa	

## Applications

<b>Tested Applications:</b> FC (Intra), IF	<b>Positive Controls:</b> IF : SH-SY5Y cells,
<b>Species Specificity:</b> human, mouse, rat	

## Background Information

NEFL, also named as NF68 and NF-L, belongs to the intermediate filament family. Neurofilaments are the 10 nm intermediate filaments found specifically in neurons. They are a major component of the cell's cytoskeleton, and provide support for normal axonal radial growth. Neurofilaments usually contain three intermediate filament proteins: L, M, and H, which are involved in the maintenance of neuronal caliber. The names given to the three major neurofilament subunits are based upon the apparent molecular weight of the mammalian subunits on SDS-PAGE: NF-L, 65-68 kDa; NF-M, 145-160 kDa and NF-H, 200-220 kDa. This antibody is specific to NEFL. It has a very weak reaction to NEFM.

## Storage

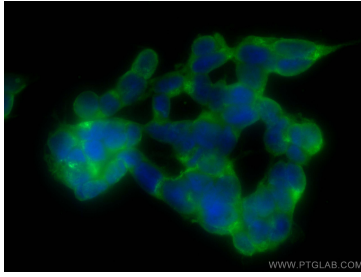
**Storage:**  
Store at -20°C. Avoid exposure to light. Stable for one year after shipment.  
**Storage Buffer:**  
PBS with 50% Glycerol, 0.05% Proclin300, 0.5% BSA, pH 7.3.  
Aliquoting is unnecessary for -20°C storage

\*\*\* 20ul sizes contain 0.1% BSA

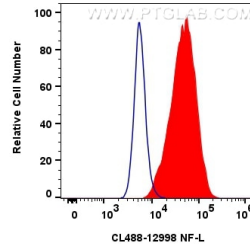
For technical support and original validation data for this product please contact:  
T: 1 (888) 4PTGLAB (1-888-478-4522) (toll free in USA), or 1(312) 455-8498 (outside USA)  
E: proteintech@ptglab.com  
W: ptglab.com

This product is exclusively available under Proteintech Group brand and is not available to purchase from any other manufacturer.

## Selected Validation Data



Immunofluorescent analysis of (-20°C Ethanol) fixed SH-SY5Y cells using CoraLite® Plus 488 NF-L antibody (CL488-12998) at dilution of 1:200.



1x10<sup>6</sup> SH-SY5Y cells were intracellularly stained with 0.8 ug CoraLite® Plus 488 Anti-Human NF-L (CL488-12998) (red), or 0.8 ug CoraLite® Plus 488-conjugated Rabbit IgG control Rabbit PolyAb (CL488-30000, Clone: ) (blue). Cells were fixed with 4% PFA and permeabilized with Flow Cytometry Perm Buffer (PF00011-C).