

For Research Use Only

CoraLite® Plus 488-conjugated ZFYVE16 Polyclonal antibody

Catalog Number: CL488-13118

Featured Product



Basic Information

Catalog Number:

CL488-13118

Size:

100ul , Concentration: 1000 ug/ml by Nanodrop;

Source:

Rabbit

Isotype:

IgG

Immunogen Catalog Number:

AG3811

GenBank Accession Number:

BC032227

GeneID (NCBI):

9765

UNIPROT ID:

Q7Z3T8

Full Name:

zinc finger, FYVE domain containing 16

Calculated MW:

1539 aa, 169 kDa

Observed MW:

230-250 kDa

Purification Method:

Antigen affinity purification

Recommended Dilutions:

IF/ICC 1:50-1:500

Excitation/Emission maxima wavelengths:

493 nm / 522 nm

Applications

Tested Applications:

IF/ICC

Species Specificity:

human, mouse, rat

Positive Controls:

IF/ICC : HeLa cells,

Background Information

Endofin (also known as ZFYVE16) is an endosomal FYVE domain protein implicated in regulating membrane trafficking. Endofin has been shown to localize to early endosomes. It co-localizes with SARA but does not associate with it or Smad2 and does not behave like SARA in affecting TGF-signaling. Northern blot analysis showed ZFYVE16 was widely expressed with high levels in kidney, placenta and lung. Overexpression of Endofin causes endosome aggregation. The gene of ZFYVE16 maps to chromosome 5q14, and encodes a 1539-amino acid protein with a molecular mass of 169 kDa. In addition, endogenous Endofin can also be detected as a band of 230-250 kDa. (PMID: 11546807)

Storage

Storage:

Store at -20°C. Avoid exposure to light. Stable for one year after shipment.

Storage Buffer:

PBS with 50% Glycerol, 0.05% Proclin300, 0.5% BSA, pH 7.3.

Aliquoting is unnecessary for -20°C storage

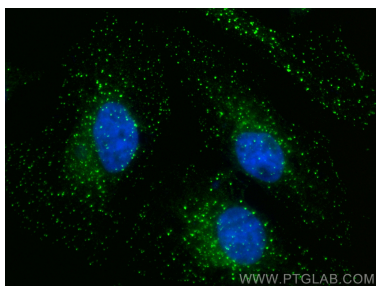
For technical support and original validation data for this product please contact:

T: 1 (888) 4PTGLAB (1-888-478-4522) (toll free in USA), or 1(312) 455-8498 (outside USA)

E: proteintech@ptglab.com
W: ptglab.com

This product is exclusively available under Proteintech Group brand and is not available to purchase from any other manufacturer.

Selected Validation Data



Immunofluorescent analysis of (4% PFA) fixed HeLa cells using CoraLite® Plus 488 ZFYVE16 antibody (CL488-13118) at dilution of 1:200.