

For Research Use Only

CoraLite® Plus 488-conjugated CSDE1 Polyclonal antibody



Catalog Number: CL488-13319

Featured Product

Basic Information

Catalog Number:

CL488-13319

Size:

100ul , Concentration: 1000 µg/ml by
Nanodrop;

Source:

Rabbit

Isotype:

IgG

Immunogen Catalog Number:

AG4173

GenBank Accession Number:

BC032446

GeneID (NCBI):

7812

UNIPROT ID:

O75534

Full Name:

cold shock domain containing E1,
RNA-binding

Calculated MW:

798 aa, 89 kDa

Observed MW:

89 kDa

Purification Method:

Antigen affinity purification

Recommended Dilutions:

IF 1:50-1:500

Excitation/Emission maxima
wavelengths:

493 nm / 522 nm

Applications

Tested Applications:

IF

Species Specificity:

human, mouse

Positive Controls:

IF : HeLa cells,

Background Information

CSDE1 (Cold shock domain-containing protein E1), also known as UNR (upstream of N-ras), is an RNA-binding protein involved in the regulation of messenger RNA stability and internal initiation of translation. It is required for internal initiation of translation of human rhinovirus RNA. UNR may be involved in translationally coupled mRNA turnover. Reduced expression of UNR impairs proliferation and differentiation of erythroid blasts. Recent study found that UNR acts as a positive or negative regulator of cell death, depending on the cell type, suggesting manipulation of UNR level may constitute a specific approach to sensitize cancer cells to anticancer treatments.

Storage

Storage:

Store at -20°C. Avoid exposure to light. Stable for one year after shipment.

Storage Buffer:

PBS with 50% Glycerol, 0.05% Proclin300, 0.5% BSA, pH 7.3.

Aliquoting is unnecessary for -20°C storage

*** 20ul sizes contain 0.1% BSA

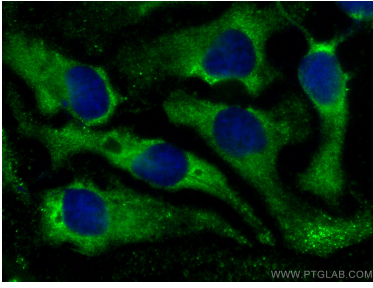
For technical support and original validation data for this product please contact:

T: 1 (888) 4PTGLAB (1-888-478-4522) (toll free
in USA), or 1(312) 455-8498 (outside USA)

E: proteintech@ptglab.com
W: ptglab.com

This product is exclusively available under Proteintech Group brand and is not available to purchase from any other manufacturer.

Selected Validation Data



Immunofluorescent analysis of (-20°C Methanol) fixed HeLa cells using Coralite® Plus 488 CSDE1 antibody (CL488-13319) at dilution of 1:200.