

For Research Use Only

CoraLite® Plus 488-conjugated PPP3CA Polyclonal antibody



Catalog Number: CL488-13422

Basic Information

Catalog Number: CL488-13422	GenBank Accession Number: BC025714	Purification Method: Antigen affinity purification
Size: 100ul , Concentration: 1000 µg/ml by Nanodrop;	GeneID (NCBI): 5530	Recommended Dilutions: IF 1:50-1:500
Source: Rabbit	Full Name: protein phosphatase 3 (formerly 2B), catalytic subunit, alpha isoform	Excitation/Emission maxima wavelengths: 488 nm / 515 nm
Isotype: IgG	Calculated MW: 59 kDa	
Immunogen Catalog Number: AG4203	Observed MW: 59 kDa	

Applications

Tested Applications: IF	Positive Controls: IF : HeLa cells,
Species Specificity: human, mouse	

Background Information

PPP3CA, also called calcineurin A α , is the only serine/threonine protein phosphatase under the control of Ca $^{2+}$ /calmodulin, and plays a critical role in the coupling of Ca $^{2+}$ signals to cellular responses. Ca $^{2+}$ signaling plays a central role in hypertrophic growth of cardiac and skeletal muscle in response to mechanical load and a variety of signals. Therefore, PPP3CA plays an important role in muscle differentiation, especially in muscle fiber type conversion. It is also involved in osteoclast regulation, regulating bone formation through an effect on osteoblast differentiation.

Storage

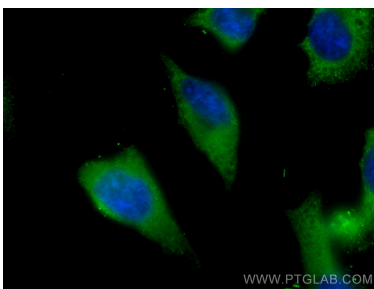
Storage:
Store at -20°C. Avoid exposure to light. Stable for one year after shipment.
Storage Buffer:
PBS with 50% Glycerol, 0.05% Proclin300, 0.5% BSA, pH 7.3.
Aliquoting is unnecessary for -20°C storage

*** 20ul sizes contain 0.1% BSA

For technical support and original validation data for this product please contact:
T: 1 (888) 4PTGLAB (1-888-478-4522) (toll free in USA), or 1(312) 455-8498 (outside USA)
E: proteintech@ptglab.com
W: ptglab.com

This product is exclusively available under Proteintech Group brand and is not available to purchase from any other manufacturer.

Selected Validation Data



Immunofluorescent analysis of (-20°C Methanol) fixed HeLa cells using CoraLite® Plus 488 PPP3CA antibody (CL488-13422) at dilution of 1:200.