

For Research Use Only



CoraLite® Plus 488-conjugated Caspase 8/P43/P18 Polyclonal antibody

Catalog Number: **CL488-13423**

Featured Product

Basic Information

Catalog Number:

CL488-13423

Size:

100ul , Concentration: 1000 ug/ml by Nanodrop;

Source:

Rabbit

Isotype:

IgG

Immunogen Catalog Number:

AG4214

GenBank Accession Number:

BC028223

GeneID (NCBI):

841

UNIPROT ID:

Q14790

Full Name:

caspase 8, apoptosis-related cysteine peptidase

Calculated MW:

538 aa, 62 kDa

Observed MW:

53-57 kDa, 32-45 kDa

Purification Method:

Antigen affinity purification

Recommended Dilutions:

IF/ICC 1:50-1:500

Excitation/Emission maxima wavelengths:

493 nm / 522 nm

Applications

Tested Applications:

IF/ICC, FC (Intra)

Species Specificity:

human, mouse

Positive Controls:

IF/ICC : HepG2 cells,

Background Information

CASP8, also named as MCH5, MACH, FLICE, and CAP4, belongs to the peptidase C14A family. It may participate in the GZMB apoptotic pathways and functions as an upstream regulator in a-bisabolol-induced apoptosis. CASP8 catalyzes an essential intermediate step in the ubiquitination and proteasome-mediated degradation of IRF3(PMID:21816816). It may control diabetic embryopathy-associated apoptosis via regulation of the Bid-stimulated mitochondrion/caspase-9 pathway (PMID:19194987). CASP8 is expressed as nine isoforms by alternative splicing with the molecular mass from 26 kDa to 62 kDa. This antibody can recognize the pro- and cleaved-caspase 8.

Storage

Storage:

Store at -20°C. Avoid exposure to light. Stable for one year after shipment.

Storage Buffer:

PBS with 50% Glycerol, 0.05% Proclin300, 0.5% BSA, pH 7.3.

Aliquoting is unnecessary for -20°C storage

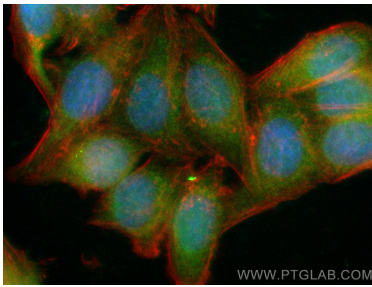
For technical support and original validation data for this product please contact:

T: 1 (888) 4PTGLAB (1-888-478-4522) (toll free in USA), or 1(312) 455-8498 (outside USA)

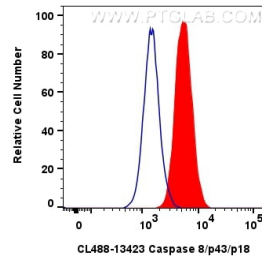
E: proteintech@ptglab.com
W: ptglab.com

This product is exclusively available under Proteintech Group brand and is not available to purchase from any other manufacturer.

Selected Validation Data



Immunofluorescent analysis of (4% PFA) fixed HepG2 cells using CoraLite® Plus 488 Caspase 8/P43/P18 antibody (CL488-13423) at dilution of 1:100, CL594-Phalloidin (red).



1x10⁶ HepG2 cells were intracellularly stained with 0.8 ug CoraLite® Plus 488 Caspase 8/P43/P18 Polyclonal Antibody (CL488-13423)(red), or 0.8 ug CoraLite® Plus 488-conjugated Rabbit IgG control Rabbit PolyAb (CL488-30000) (blue). Cells were fixed and permeabilized with Transcription Factor Staining Buffer Kit (PF00011).