

For Research Use Only

CoraLite® Plus 488-conjugated MTPN Polyclonal antibody

Catalog Number: CL488-13508



Basic Information

Catalog Number:

CL488-13508

Size:

100ul , Concentration: 1000 ug/ml by Nanodrop;

Source:

Rabbit

Isotype:

IgG

Immunogen Catalog Number:

AG4419

GenBank Accession Number:

BC028093

GeneID (NCBI):

136319

UNIPROT ID:

P58546

Full Name:

myotrophin

Calculated MW:

118 aa, 13 kDa

Observed MW:

12 kDa

Purification Method:

Antigen affinity purification

Recommended Dilutions:

IF/ICC 1:50-1:500

Excitation/Emission maxima wavelengths:

493 nm / 522 nm

Applications

Tested Applications:

IF/ICC

Species Specificity:

human, mouse, rat

Positive Controls:

IF/ICC : HepG2 cells,

Background Information

Myotrophin (MTPN) is a ubiquitously expressed 12 kDa cytoplasmic protein that was first isolated from the hearts of spontaneously hypertensive rats. Protein sequence analysis revealed that MTPN was composed of 118 amino acids and was occupied by two and a half internal 33 amino acid ankyrin repeats. MTPN stimulates protein synthesis and increases the expression of a number of cardiac marker genes (such as atrial natriuretic factor and b-myosin heavy chain) in cardiomyocytes leading to hypertrophy. In skeletal muscle, MTPN is also a positive growth factor in promoting skeletal muscle growth.

Storage

Storage:

Store at -20°C. Avoid exposure to light. Stable for one year after shipment.

Storage Buffer:

PBS with 50% Glycerol, 0.05% Proclin300, 0.5% BSA, pH 7.3.

Aliquoting is unnecessary for -20°C storage

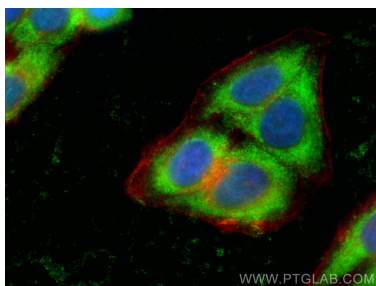
For technical support and original validation data for this product please contact:

T: 1 (888) 4PTGLAB (1-888-478-4522) (toll free in USA), or 1(312) 455-8498 (outside USA)

E: proteintech@ptglab.com
W: ptglab.com

This product is exclusively available under Proteintech Group brand and is not available to purchase from any other manufacturer.

Selected Validation Data



Immunofluorescent analysis of (-20°C Ethanol) fixed HepG2 cells using CoraLite® Plus 488 MTPN antibody (CL488-13508) at dilution of 1:200, CL594-Phalloidin (red).