

For Research Use Only

CoraLite® Plus 488-conjugated IFT20 Polyclonal antibody



Catalog Number: CL488-13615

Featured Product

Basic Information

Catalog Number:

CL488-13615

Size:

100ul , Concentration: 1000 µg/ml by Nanodrop;

Source:

Rabbit

Isotype:

IgG

Immunogen Catalog Number:

AG4521

GenBank Accession Number:

BC038094

GeneID (NCBI):

90410

UNIPROT ID:

Q8IY31

Full Name:

intraflagellar transport 20 homolog (Chlamydomonas)

Calculated MW:

15 kDa

Observed MW:

15-18 kDa

Purification Method:

Antigen affinity purification

Recommended Dilutions:

IF 1:50-1:500

Excitation/Emission maxima wavelengths:

493 nm / 522 nm

Applications

Tested Applications:

IF

Species Specificity:

human, mouse, Canine

Positive Controls:

IF : hTERT-RPE1 cells,

Background Information

Intraflagellar transport (IFT), mediated by molecular motors and IFT particles, is an important transport process that occurs in the cilium. IFT particles are multi-subunit complexes that are made up of complex A and complex B. IFT20 is a component of IFT complex B and involved in ciliary process assembly. It is associated with the Golgi complex and plays a role in the trafficking of ciliary membrane proteins from the Golgi complex to the cilium.

Storage

Storage:

Store at -20°C. Avoid exposure to light. Stable for one year after shipment.

Storage Buffer:

PBS with 50% Glycerol, 0.05% Proclin300, 0.5% BSA, pH 7.3.

Aliquoting is unnecessary for -20°C storage

*** 20ul sizes contain 0.1% BSA

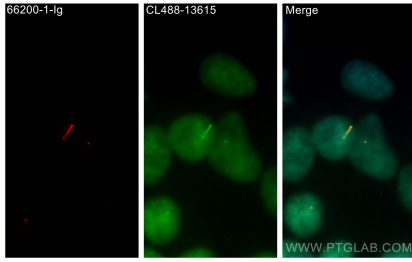
For technical support and original validation data for this product please contact:

T: 1 (888) 4PTGLAB (1-888-478-4522) (toll free in USA), or 1(312) 455-8498 (outside USA)

E: proteintech@ptglab.com
W: ptglab.com

This product is exclusively available under Proteintech Group brand and is not available to purchase from any other manufacturer.

Selected Validation Data



Immunofluorescent analysis of (-20°C Methanol) fixed hTERT-RPE1 cells using CoraLite® Plus 488 IFT20 antibody (CL488-13615) at dilution of 1:200.