

For Research Use Only

CoraLite® Plus 488-conjugated CaMKII alpha Polyclonal antibody

Catalog Number: CL488-13730



Basic Information

Catalog Number: CL488-13730	GenBank Accession Number: BC040457	Purification Method: Antigen affinity purification
Size: 100ul , Concentration: 1000 ug/ml by Nanodrop;	GeneID (NCBI): 815	Recommended Dilutions: IF/ICC 1:50-1:500
Source: Rabbit	UNIPROT ID: Q9UQM7	Excitation/Emission maxima wavelengths: 493 nm / 522 nm
Isotype: IgG	Full Name: calcium/calmodulin-dependent protein kinase II alpha	
Immunogen Catalog Number: AG4745	Calculated MW: 478 aa, 54 kDa	
	Observed MW: 45-60 kDa	

Applications

Tested Applications: IF/ICC, FC (Intra)	Positive Controls: IF/ICC : SH-SY5Y cells,
Species Specificity: human, mouse, rat	

Background Information

CaM-kinase II (CAMK2) is a prominent kinase in the central nervous system that may function in long-term potentiation and neurotransmitter release. It is a member of the NMDAR signaling complex in excitatory synapses it may regulate NMDAR-dependent potentiation of the AMPAR and synaptic plasticity. This antibody can recognize all the members of CAMK2 family.

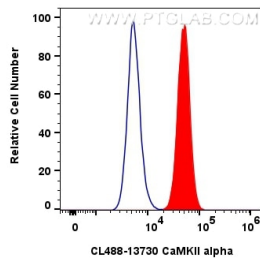
Storage

Storage:
Store at -20°C. Avoid exposure to light. Stable for one year after shipment.
Storage Buffer:
PBS with 50% Glycerol, 0.05% Proclin300, 0.5% BSA, pH 7.3.
Aliquoting is unnecessary for -20°C storage

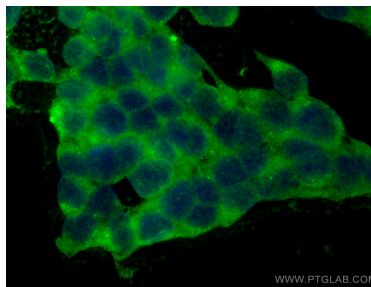
For technical support and original validation data for this product please contact:
T: 1 (888) 4PTGLAB (1-888-478-4522) (toll free in USA), or 1(312) 455-8498 (outside USA)
E: proteintech@ptglab.com
W: ptglab.com

This product is exclusively available under Proteintech Group brand and is not available to purchase from any other manufacturer.

Selected Validation Data



1x10⁶ SH-SY5Y cells were intracellularly stained with 0.8 ug CoraLite® Plus 488 Anti-Human CaMKII alpha (CL488-13730) (red), or 0.8 ug CoraLite® Plus 488-conjugated Rabbit IgG control Rabbit PolyAb (CL488-30000, Clone:) (blue). Cells were fixed with 4% PFA and permeabilized with Flow Cytometry Perm Buffer (PF00011-C).



Immunofluorescent analysis of (-20°C Ethanol) fixed SH-SY5Y cells using CoraLite® Plus 488 CaMKII alpha antibody (CL488-13730) at dilution of 1:200.