

For Research Use Only

CoraLite® Plus 488-conjugated TRAK2 Polyclonal antibody



Catalog Number: CL488-13770

Basic Information

Catalog Number: CL488-13770	GenBank Accession Number: BC040668	Purification Method: Antigen affinity purification
Size: 100ul , Concentration: 1000 µg/ml by Nanodrop;	GeneID (NCBI): 66008	Recommended Dilutions: IF 1:50-1:500
Source: Rabbit	UNIPROT ID: O60296	Excitation/Emission maxima wavelengths: 493 nm / 522 nm
Isotype: IgG	Full Name: trafficking protein, kinesin binding 2	
Immunogen Catalog Number: AG4753	Calculated MW: 914 aa, 101 kDa	
	Observed MW: 101-106 kDa	

Applications

Tested Applications: IF	Positive Controls: IF : HeLa cells,
Species Specificity: human, mouse, rat	

Background Information

Trafficking kinesin-binding protein 2 (TRAK2) is a member of the TRAK family of kinesin adaptor proteins. In mammals, there are two members of the TRAK family, TRAK1 and TRAK2 (PMID: 25653102). TRAK1 and TRAK2 play roles in lysosomal and mitochondrial trafficking in cells. They function as kinesin adaptors linking kinesin heavy chain (KHC) to mitochondria (PMID: 28364549). TRAK2 has been found to act as a trafficking factor for the K⁺ channel Kir2.1 and γ-Aminobutyric acid type A (GABA_A) receptor (PMID: 16895905; 24122114).

Storage

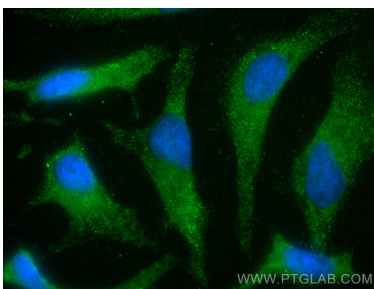
Storage:
Store at -20°C. Avoid exposure to light. Stable for one year after shipment.
Storage Buffer:
PBS with 50% Glycerol, 0.05% Proclin300, 0.5% BSA, pH 7.3.
Aliquoting is unnecessary for -20°C storage

*** 20ul sizes contain 0.1% BSA

For technical support and original validation data for this product please contact:
T: 1 (888) 4PTGLAB (1-888-478-4522) (toll free in USA), or 1(312) 455-8498 (outside USA)
E: proteintech@ptglab.com
W: ptglab.com

This product is exclusively available under Proteintech Group brand and is not available to purchase from any other manufacturer.

Selected Validation Data



Immunofluorescent analysis of (-20°C Methanol) fixed HeLa cells using CoraLite® Plus 488 TRAK2 antibody (CL488-13770) at dilution of 1:200.