

For Research Use Only

CoraLite® Plus 488-conjugated Spartin, SPG20 Polyclonal antibody



Catalog Number: CL488-13791

Featured Product

Basic Information

Catalog Number: CL488-13791	GenBank Accession Number: BC047083	Purification Method: Antigen affinity purification
Size: 100ul , Concentration: 1000 µg/ml by Nanodrop;	GeneID (NCBI): 23111	Recommended Dilutions: IF 1:50-1:500
Source: Rabbit	Full Name: spastic paraplegia 20 (Troyer syndrome)	Excitation/Emission maxima wavelengths: 488 nm / 515 nm
Isotype: IgG	Calculated MW: 75 kDa, 85 kDa	
Immunogen Catalog Number: AG4815		

Applications

Tested Applications: FC (Intra), IF	Positive Controls: IF : HepG2 cells,
Species Specificity: human, mouse, rat	

Background Information

SPG20 (spastic paraplegia 20) gene encodes a multifunctional Spartin protein. SPG20 protein is highly expressed in adipose tissue and may be implicated in endosomal trafficking and microtubule dynamics. SPG20 is mutated in Troyer syndrome, a hereditary spastic paraplegia defined by degeneration of upper motor neurons, recent study showed that regulation of SPG20 on mitochondrial calcium homeostasis may contribute to the pathophysiology of Troyer syndrome. Hypermethylation of SPG20 promoter, found in colorectal cancer patients, may play a role in cytokinesis arrest in colorectal tumorigenesis.

Storage

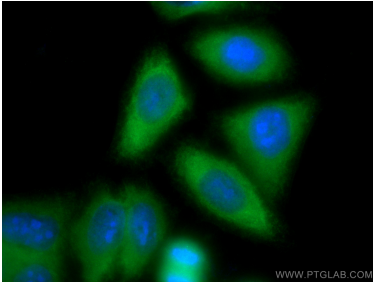
Storage:
Store at -20°C. Avoid exposure to light.
Storage Buffer:
PBS with 50% Glycerol, 0.05% Proclin300, 0.5% BSA, pH 7.3.
Aliquoting is unnecessary for -20°C storage

*** 20ul sizes contain 0.1% BSA

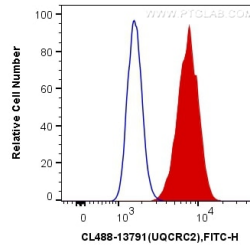
For technical support and original validation data for this product please contact:
T: 1 (888) 4PTGLAB (1-888-478-4522) (toll free in USA), or 1(312) 455-8498 (outside USA)
E: proteintech@ptglab.com
W: ptglab.com

This product is exclusively available under Proteintech Group brand and is not available to purchase from any other manufacturer.

Selected Validation Data



Immunofluorescent analysis of (-20°C Methanol) fixed HepG2 cells using CoraLite® Plus 488 Spartin, SPG20 antibody (CL488-13791) at dilution of 1:100.



1X10⁶ HepG2 cells were intracellularly stained with 0.4 ug CoraLite® Plus 488 Anti-Human Spartin, SPG20 (CL488-13791) (red), or 0.4 ug Control Antibody. Cells were fixed with 4% PFA and permeabilized with Flow Cytometry Perm Buffer (PF00011-C).