

For Research Use Only

CoraLite® Plus 488-conjugated GREM2 Polyclonal antibody

Catalog Number: CL488-13892



Basic Information

Catalog Number:

CL488-13892

Size:

100ul , Concentration: 1000 ug/ml by Nanodrop;

Source:

Rabbit

Isotype:

IgG

Immunogen Catalog Number:

AG4854

GenBank Accession Number:

BC046632

GeneID (NCBI):

64388

UNIPROT ID:

Q9H772

Full Name:

gremlin 2, cysteine knot superfamily, homolog (Xenopus laevis)

Calculated MW:

168 aa, 19 kDa

Purification Method:

Antigen affinity purification

Recommended Dilutions:

IF-P 1:50-1:500

Excitation/Emission maxima wavelengths:

493 nm / 522 nm

Applications

Tested Applications:

IF-P, FC (Intra)

Species Specificity:

human, mouse

Positive Controls:

IF-P: mouse kidney tissue,

Storage

Storage:

Store at -20°C. Avoid exposure to light. Stable for one year after shipment.

Storage Buffer:

PBS with 50% Glycerol, 0.05% Proclin300, 0.5% BSA, pH 7.3.

Aliquoting is unnecessary for -20°C storage

For technical support and original validation data for this product please contact:

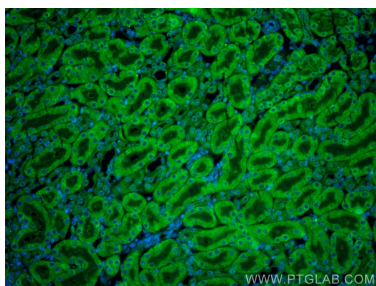
T: 1 (888) 4PTGLAB (1-888-478-4522) (toll free in USA), or 1(312) 455-8498 (outside USA)

E: proteintech@ptglab.com

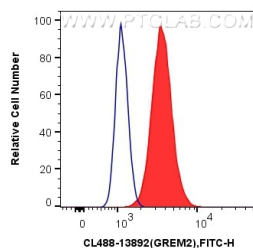
W: ptglab.com

This product is exclusively available under Proteintech Group brand and is not available to purchase from any other manufacturer.

Selected Validation Data



Immunofluorescent analysis of (4% PFA) fixed mouse kidney tissue using Coralite® Plus 488 GREM2 antibody (CL488-13892) at dilution of 1:200.



1×10^6 HCT 116 cells were intracellularly stained with 0.4 μ g Coralite® Plus 488 Anti-Human GREM2 (CL488-13892) (red), or 0.4 μ g Coralite® Plus 488-conjugated Rabbit IgG control Rabbit PolyAb (CL488-30000, Clone:) (blue). Cells were fixed with 4% PFA and permeabilized with Flow Cytometry Perm Buffer (PF00011-C).