

For Research Use Only

CoraLite® Plus 488-conjugated HSPA1L Polyclonal antibody

Catalog Number: CL488-13970

Featured Product



Basic Information

Catalog Number:

CL488-13970

Size:

100ul , Concentration: 1000 ug/ml by Nanodrop;

Source:

Rabbit

Isotype:

IgG

Immunogen Catalog Number:

AG4995

GenBank Accession Number:

BC034483

GeneID (NCBI):

3305

UNIPROT ID:

P34931

Full Name:

heat shock 70kDa protein 1-like

Calculated MW:

70 kDa

Observed MW:

70 kDa

Purification Method:

Antigen affinity purification

Recommended Dilutions:

IF/ICC 1:50-1:500

Excitation/Emission maxima wavelengths:

493 nm / 522 nm

Applications

Tested Applications:

IF/ICC

Species Specificity:

human, mouse, rat

Positive Controls:

IF/ICC : HepG2 cells,

Background Information

HSPA1L (Hsp70-like protein 1, also known as HSP70-hom) is a member of Hsp70 family of heat shock proteins. Recently it has been reported that HSPA1L can interact with TLR4, activate dendritic cells and induce Th1 Response. This antibody well recognized the endogenous HSPA1L protein in multiple cell lines. (21730052)

Storage

Storage:

Store at -20°C. Avoid exposure to light. Stable for one year after shipment.

Storage Buffer:

PBS with 50% Glycerol, 0.05% Proclin300, 0.5% BSA, pH 7.3.

Aliquoting is unnecessary for -20°C storage

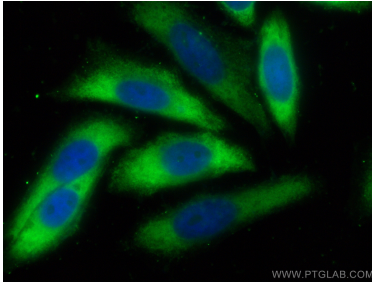
For technical support and original validation data for this product please contact:

T: 1 (888) 4PTGLAB (1-888-478-4522) (toll free in USA), or 1(312) 455-8498 (outside USA)

E: proteintech@ptglab.com
W: ptglab.com

This product is exclusively available under Proteintech Group brand and is not available to purchase from any other manufacturer.

Selected Validation Data



Immunofluorescent analysis of (-20°C Ethanol) fixed HepG2 cells using CoraLite® Plus 488 HSPA1L antibody (CL488-13970) at dilution of 1:200.