

For Research Use Only

CoraLite® Plus 488-conjugated FATP2 Polyclonal antibody

Catalog Number: CL488-14048

Featured Product



Basic Information

Catalog Number:

CL488-14048

Size:

100ul , Concentration: 1000 ug/ml by Nanodrop;

Source:

Rabbit

Isotype:

IgG

Immunogen Catalog Number:

AG5217

GenBank Accession Number:

BC057770

GeneID (NCBI):

11001

UNIPROT ID:

O14975

Full Name:

solute carrier family 27 (fatty acid transporter), member 2

Calculated MW:

567 aa, 65 kDa

Observed MW:

70 kDa

Purification Method:

Antigen affinity purification

Recommended Dilutions:

IF/ICC 1:50-1:500

Excitation/Emission maxima wavelengths:

493 nm / 522 nm

Applications

Tested Applications:

IF/ICC

Species Specificity:

human, mouse, rat

Positive Controls:

IF/ICC : HepG2 cells,

Background Information

FATP2 is a member of the FATP family which functions in lipid and bile metabolism. It is a 70-kDa protein predominantly expressed in liver and kidney. Kidney FATP2 is localized exclusively to proximal tubule epithelial cells along the apical but not the basolateral membrane, and regulates lipopapoptosis. FATP2 is involved in metabolism-related diseases including nonalcoholic fatty liver disease (NAFLD) and type 2 diabetes mellitus (T2DM), and is a potential clinical biomarker and therapeutic target.

Storage

Storage:

Store at -20°C. Avoid exposure to light. Stable for one year after shipment.

Storage Buffer:

PBS with 50% Glycerol, 0.05% Proclin300, 0.5% BSA, pH 7.3.

Aliquoting is unnecessary for -20°C storage

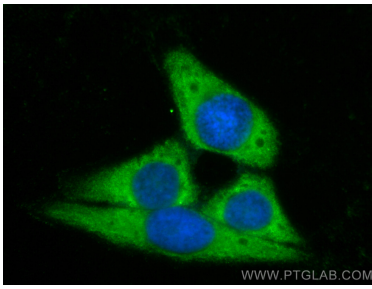
For technical support and original validation data for this product please contact:

T: 1 (888) 4PTGLAB (1-888-478-4522) (toll free in USA), or 1(312) 455-8498 (outside USA)

E: proteintech@ptglab.com
W: ptglab.com

This product is exclusively available under Proteintech Group brand and is not available to purchase from any other manufacturer.

Selected Validation Data



Immunofluorescent analysis of (-20°C Methanol) fixed HepG2 cells using CoraLite® Plus 488 FATP2 antibody (CL488-14048) at dilution of 1:200.