

For Research Use Only

CoraLite® Plus 488-conjugated PARK2/Parkin Polyclonal antibody

Catalog Number: CL488-14060

Featured Product



Basic Information

Catalog Number:

CL488-14060

Size:

100ul, Concentration: 1000 ug/ml by Nanodrop;

Source:

Rabbit

Isotype:

IgG

Immunogen Catalog Number:

AG5092

GenBank Accession Number:

BC022014

GeneID (NCBI):

5071

UNIPROT ID:

O60260

Full Name:

Parkinson disease (autosomal recessive, juvenile) 2, parkin

Calculated MW:

52 kDa

Observed MW:

42-52 kDa

Purification Method:

Antigen affinity purification

Recommended Dilutions:

IF-P 1:50-1:500

Excitation/Emission maxima wavelengths:

493 nm / 522 nm

Applications

Tested Applications:

IF-P

Species Specificity:

human, mouse, rat

Positive Controls:

IF-P: mouse heart tissue, mouse brain tissue

Background Information

Parkin, a RING-type E3 ubiquitin-protein ligase, is involved in the ubiquitination pathway and contributes to protection from neurotoxicity induced by unfolded protein stresses. Its ubiquitin-protein ligase activity promotes the degradation of a variety of proteins including itself. Mutations in Parkin are implicated in the pathogenesis of autosomal recessive familial Parkinson's disease. It has 8 isoforms produced by alternative splicing.

Storage

Storage:

Store at -20°C. Avoid exposure to light. Stable for one year after shipment.

Storage Buffer:

PBS with 50% Glycerol, 0.05% Proclin300, 0.5% BSA, pH 7.3.

Aliquoting is unnecessary for -20°C storage

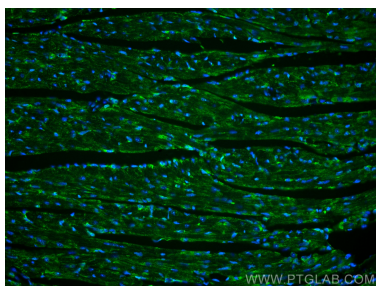
For technical support and original validation data for this product please contact:

T: 1 (888) 4PTGLAB (1-888-478-4522) (toll free in USA), or 1(312) 455-8498 (outside USA)

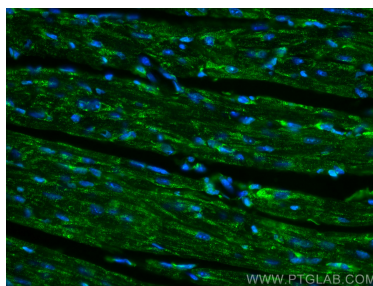
E: proteintech@ptglab.com
W: ptglab.com

This product is exclusively available under Proteintech Group brand and is not available to purchase from any other manufacturer.

Selected Validation Data



Immunofluorescent analysis of (4% PFA) fixed mouse heart tissue using Coralite® Plus 488 PARK2/Parkin antibody (CL488-14060) at dilution of 1:200.



Immunofluorescent analysis of (4% PFA) fixed mouse heart tissue using Coralite® Plus 488 PARK2/Parkin antibody (CL488-14060) at dilution of 1:200.