

For Research Use Only

# CoraLite® Plus 488-conjugated IRGC Polyclonal antibody

Catalog Number:CL488-14090



## Basic Information

**Catalog Number:**

CL488-14090

**Size:**

100ul , Concentration: 1000 ug/ml by Nanodrop;

**Source:**

Rabbit

**Isotype:**

IgG

**Immunogen Catalog Number:**

AG5279

**GenBank Accession Number:**

BC066939

**GeneID (NCBI):**

56269

**UNIPROT ID:**

Q6NXRO

**Full Name:**

immunity-related GTPase family, cinema

**Calculated MW:**

50 kDa

**Observed MW:**

50 kDa

**Purification Method:**

Antigen affinity purification

**Recommended Dilutions:**

IF/ICC: 1:50-1:500

**Excitation/Emission maxima wavelengths:**

493 nm / 522 nm

## Applications

**Tested Applications:**

IF/ICC

**Species Specificity:**

human, mouse, rat

**Positive Controls:**

IF/ICC : SH-SY5Y cells,

## Storage

**Storage:**

Store at -20°C. Avoid exposure to light. Stable for one year after shipment.

**Storage Buffer:**

PBS with 50% glycerol, 0.05% Proclin300, 0.5% BSA, pH7.3

Aliquoting is unnecessary for -20°C storage

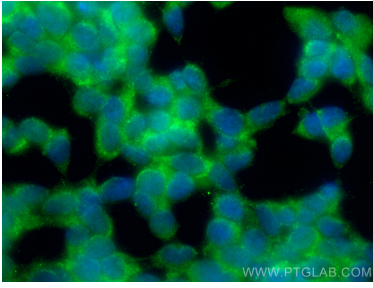
For technical support and original validation data for this product please contact:

T: 1 (888) 4PTGLAB (1-888-478-4522) (toll free in USA), or 1(312) 455-8498 (outside USA)

E: proteintech@ptglab.com  
W: ptglab.com

This product is exclusively available under Proteintech Group brand and is not available to purchase from any other manufacturer.

## Selected Validation Data



Immunofluorescent analysis of (-20°C Ethanol) fixed SH-SY5Y cells using CoraLite® Plus 488 IRGC antibody (CL488-14090) at dilution of 1:200.