

For Research Use Only

CoraLite® Plus 488-conjugated TPPII Polyclonal antibody

Catalog Number: CL488-14120

Featured Product



Basic Information

Catalog Number:

CL488-14120

Size:

100ul , Concentration: 1000 ug/ml by Nanodrop;

Source:

Rabbit

Isotype:

IgG

Immunogen Catalog Number:

AG5296

GenBank Accession Number:

BC039905

GeneID (NCBI):

7174

UNIPROT ID:

P29144

Full Name:

tripeptidyl peptidase II

Calculated MW:

1249 aa, 138 kDa

Observed MW:

135-140 kDa

Purification Method:

Antigen affinity purification

Recommended Dilutions:

IF/ICC 1:50-1:500

Excitation/Emission maxima wavelengths:

493 nm / 522 nm

Applications

Tested Applications:

IF/ICC, FC (Intra)

Species Specificity:

human

Positive Controls:

IF/ICC : HepG2 cells,

Background Information

TPPII(Tripeptidyl-peptidase 2) is an evolutionary conserved serine peptidase of the subtilisin family that removes tripeptides from the free NH2 terminus of oligopeptides. The 138-kDa TPP2 polypeptide forms large oligomeric complexes of >1,000 kDa that are detected in the cytoplasm of all cell types. In addition, a membrane associated TPP 2 isoform is present in most cells(PMID:15735022).

Storage

Storage:

Store at -20°C. Avoid exposure to light. Stable for one year after shipment.

Storage Buffer:

PBS with 50% Glycerol, 0.05% Proclin300, 0.5% BSA, pH 7.3.

Aliquoting is unnecessary for -20°C storage

For technical support and original validation data for this product please contact:

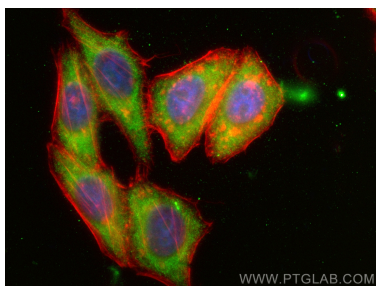
T: 1 (888) 4PTGLAB (1-888-478-4522) (toll free in USA), or 1(312) 455-8498 (outside USA)

E: proteintech@ptglab.com

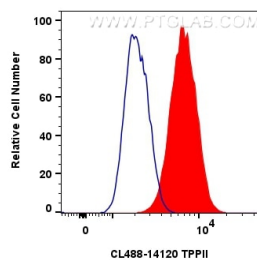
W: ptglab.com

This product is exclusively available under Proteintech Group brand and is not available to purchase from any other manufacturer.

Selected Validation Data



Immunofluorescent analysis of (-20°C Ethanol) fixed HepG2 cells using CoraLite® Plus 488 TPPII antibody (CL488-14120) at dilution of 1:200, CL594-Phalloidin (red).



1x10⁶ HepG2 cells were intracellularly stained with 0.8 ug CoraLite® Plus 488 TPPII Polyclonal Antibody (CL488-14120)(red), or 0.8 ug CoraLite® Plus 488-conjugated Rabbit IgG control Rabbit PolyAb (CL488-30000) (blue). Cells were fixed with 4% PFA and permeabilized with Flow Cytometry Perm Buffer (PF00011-C).