

For Research Use Only

# CoraLite® Plus 488-conjugated CRCP Polyclonal antibody



Catalog Number: **CL488-14348**

## Basic Information

Catalog Number: CL488-14348	GenBank Accession Number: BC040107	Purification Method: Antigen Affinity Purified
Size: 100ul , Concentration: 1000 µg/ml by Nanodrop;	GeneID (NCBI): 27297	Excitation/Emission maxima wavelengths: 488 nm / 515 nm
Source: Rabbit	Full Name: CGRP receptor component	
Isotype: IgG	Calculated MW: 17 kDa	
Immunogen Catalog Number: AG5689	Observed MW: 20 kDa	

## Applications

Tested Applications:  
FC (Intra)

Species Specificity:  
human, mouse, rat

## Background Information

### Storage

Storage:  
Store at -20°C. Avoid exposure to light.

Storage Buffer:  
PBS with 50% Glycerol, 0.05% Proclin300, 0.5% BSA, pH 7.3.

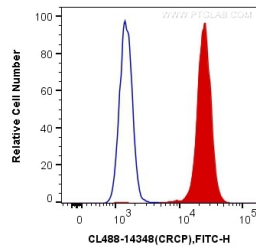
Aliquoting is unnecessary for -20°C storage

\*\*\* 20ul sizes contain 0.1% BSA

For technical support and original validation data for this product please contact:  
T: 1 (888) 4PTGLAB (1-888-478-4522) (toll free in USA), or 1(312) 455-8498 (outside USA)  
E: [proteintech@ptglab.com](mailto:proteintech@ptglab.com)  
W: [ptglab.com](http://ptglab.com)

This product is exclusively available under Proteintech Group brand and is not available to purchase from any other manufacturer.

## Selected Validation Data



1X10<sup>6</sup> Raji cells were intracellularly stained with 0.4 ug CoraLite® Plus 488 Anti-Human CRCP (CL488-14348) (red), or 0.4 ug Control Antibody. Cells were fixed and permeabilized with Transcription Factor Staining Buffer Kit (PF00011).