

For Research Use Only

CoraLite® Plus 488-conjugated Alpha smooth muscle actin Polyclonal antibody



Catalog Number: **CL488-14395**

Featured Product

4 Publications

Basic Information

Catalog Number:

CL488-14395

Size:

100ul , Concentration: 1000 ug/ml by Nanodrop;

Source:

Rabbit

Isotype:

IgG

Immunogen Catalog Number:

AG5886

GenBank Accession Number:

BC017554

GeneID (NCBI):

59

UNIPROT ID:

P62736

Full Name:

actin, alpha 2, smooth muscle, aorta

Calculated MW:

377 aa, 42 kDa

Observed MW:

43 kDa

Purification Method:

Antigen affinity purification

Recommended Dilutions:

IF-P 1:50-1:500

Excitation/Emission maxima wavelengths:

493 nm / 522 nm

Applications

Tested Applications:

IF-P

Cited Applications:

IF

Species Specificity:

human, mouse, rat

Cited Species:

mouse, rat

Positive Controls:

IF-P : mouse heart tissue, mouse small intestine tissue

Background Information

ACTA2 (also known as α -smooth muscle actin or α -SMA) belongs to the actin family. Actins are highly conserved proteins that are involved in various types of cell motility and are ubiquitously expressed in all eukaryotic cells. ACTA2 is primarily expressed in vascular smooth muscle and anti-ACTA2 is commonly used to marker smooth muscle cells. This antibody may cross-react with other isoforms of actins.

Notable Publications

Author	Pubmed ID	Journal	Application
Juncong Hong	39055306	Regen Biomater	IF
Wei Xie	38838640	Cell Metab	IF
Fei Xu	38644399	Front Med	IF

Storage

Storage:

Store at -20°C. Avoid exposure to light. Stable for one year after shipment.

Storage Buffer:

PBS with 50% Glycerol, 0.05% Proclin300, 0.5% BSA, pH 7.3.

Aliquoting is unnecessary for -20°C storage

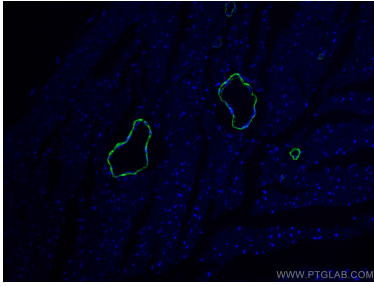
For technical support and original validation data for this product please contact:

T: 1 (888) 4PTGLAB (1-888-478-4522) (toll free in USA), or 1(312) 455-8498 (outside USA)

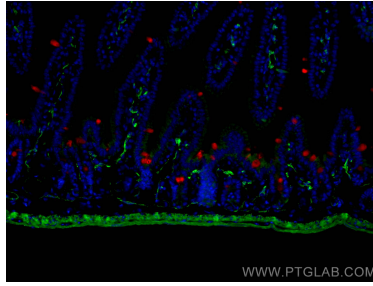
E: proteintech@ptglab.com
W: ptglab.com

This product is exclusively available under Proteintech Group brand and is not available to purchase from any other manufacturer.

Selected Validation Data



Immunofluorescent analysis of (4% PFA) fixed mouse heart tissue using CoraLite® Plus 488 smooth muscle actin antibody (CL488-14395) at dilution of 1:200.



Immunofluorescent analysis of (4% PFA) fixed mouse small intestine tissue using CoraLite® Plus 488 smooth muscle actin antibody (CL488-14395) at dilution of 1:200, CoraLite® Plus 594 ZG16 antibody (CL594-67389, Clone: 1A7B9, red).