

For Research Use Only

CoraLite® Plus 488-conjugated ATP1A1 Polyclonal antibody



Catalog Number: CL488-14418

Featured Product

Basic Information

Catalog Number: CL488-14418	GenBank Accession Number: BC050359	Purification Method: Antigen affinity purification
Size: 100ul , Concentration: 1000 µg/ml by Nanodrop;	GeneID (NCBI): 476	Recommended Dilutions: IF 1:50-1:500
Source: Rabbit	Full Name: ATPase, Na ⁺ /K ⁺ transporting, alpha 1 polypeptide	Excitation/Emission maxima wavelengths: 493 nm / 522 nm
Isotype: IgG	Calculated MW: 113 kDa	
Immunogen Catalog Number: AG5763	Observed MW: 100-110 kDa	

Applications

Tested Applications:

IF

Species Specificity:

human, mouse, rat

Positive Controls:

IF : Caco-2 cells,

Background Information

ATP1A1 is the catalytic component of Na⁺/K⁺-ATPase which is a membrane bound enzyme primarily involved in generation of Na⁺ and K⁺ gradients across plasma membranes and in determination of cytoplasmic Na⁺ levels. ATP1A1 is a ubiquitously expressed membrane protein and often used as the marker or internal control for plasma membrane protein. For optimal WB detection of this membrane protein, we recommend to avoid boiling the sample after lysis.

Storage

Storage:

Store at -20°C. Avoid exposure to light. Stable for one year after shipment.

Storage Buffer:

PBS with 50% Glycerol, 0.05% Proclin300, 0.5% BSA, pH 7.3.

Aliquoting is unnecessary for -20°C storage

*** 20ul sizes contain 0.1% BSA

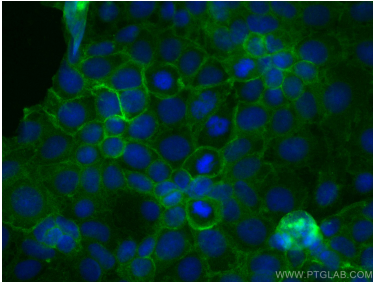
For technical support and original validation data for this product please contact:

T: 1 (888) 4PTGLAB (1-888-478-4522) (toll free
in USA), or 1(312) 455-8498 (outside USA)

E: proteintech@ptglab.com
W: ptglab.com

This product is exclusively available under Proteintech Group brand and is not available to purchase from any other manufacturer.

Selected Validation Data



Immunofluorescent analysis of (-20°C Ethanol) fixed Caco-2 cells using Coralite® Plus 488 ATP1A1 antibody (CL488-14418) at dilution of 1:200.