

For Research Use Only

CoraLite® Plus 488-conjugated Alpha Tubulin Polyclonal antibody

Catalog Number: CL488-14555



Basic Information

Catalog Number:

CL488-14555

Size:

100ul , Concentration: 1000 ug/ml by 7846

Nanodrop;

Source:

Rabbit

Isotype:

IgG

Immunogen Catalog Number:

AG6038

GenBank Accession Number:

BC050637

GeneID (NCBI):

7846

UNIPROT ID:

Q71U36

Full Name:

tubulin, alpha 1a

Calculated MW:

50 kDa

Observed MW:

50-55 kDa

Purification Method:

Antigen affinity purification

Recommended Dilutions:

IF/ICC 1:50-1:500

Excitation/Emission maxima wavelengths:

493 nm / 522 nm

Applications

Tested Applications:

IF/ICC

Species Specificity:

human, mouse, rat

Positive Controls:

IF/ICC : HeLa cells,

Storage

Storage:

Store at -20°C. Avoid exposure to light. Stable for one year after shipment.

Storage Buffer:

PBS with 50% Glycerol, 0.05% Proclin300, 0.5% BSA, pH 7.3.

Aliquoting is unnecessary for -20°C storage

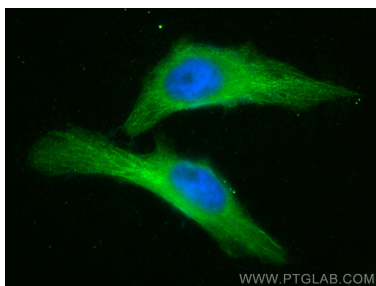
For technical support and original validation data for this product please contact:

T: 1 (888) 4PTGLAB (1-888-478-4522) (toll free in USA), or 1(312) 455-8498 (outside USA)

E: proteintech@ptglab.com
W: ptglab.com

This product is exclusively available under Proteintech Group brand and is not available to purchase from any other manufacturer.

Selected Validation Data



Immunofluorescent analysis of (4% PFA) fixed HeLa cells using CoraLite® Plus 488 Alpha Tubulin antibody (CL488-14555) at dilution of 1:200.