

For Research Use Only

# CoraLite® Plus 488-conjugated PPP1R15B Polyclonal antibody

Catalog Number: CL488-14634

Featured Product



## Basic Information

### Catalog Number:

CL488-14634

### Size:

100ul, Concentration: 1000 ug/ml by  
Nanodrop;

### Source:

Rabbit

### Isotype:

IgG

### Immunogen Catalog Number:

AG6213

### GenBank Accession Number:

BC065280

### GeneID (NCBI):

84919

### UNIPROT ID:

Q5SWA1

### Full Name:

protein phosphatase 1, regulatory  
(inhibitor) subunit 15B

### Calculated MW:

79 kDa

### Observed MW:

100-110 kDa

### Purification Method:

Antigen affinity purification

### Recommended Dilutions:

IF/ICC 1:50-1:500

### Excitation/Emission maxima wavelengths:

493 nm / 522 nm

## Applications

### Tested Applications:

IF/ICC

### Species Specificity:

human, mouse, rat

### Positive Controls:

IF/ICC : SH-SY5Y cells,

## Background Information

Protein phosphatase 1 regulatory subunit 15B(PPP1R15B) is a member of PPP1R15 family, it forms a complex with protein phosphatase1(PP1) and NCK1/2, maintaining low levels of EIF2S1 phosphorylation in unstressed cells, thus is also named constitutive repressor of eIF2alpha phosphorylation (CReP). PPP1R15B is associated in endoplasmic reticulum (ER) stress response resulting to a role in translation regulation. Knock-down of PPP1R15B strongly protected mammalian cells against oxidative stress, peroxynitrite stress, and more modestly against accumulation of malformed proteins in the ER. Recently, PPP1R15B was found to associate with cell membranes and regulate membrane traffic in a PP1c-independent manner, suggesting a novel link between translation and traffic. MW of PPP1R15B is 80 kDa. Observed MW of PPP1R15B is from 100-110 kDa maybe due to phosphorylation (PMID: 28492545).

## Storage

### Storage:

Store at -20°C. Avoid exposure to light. Stable for one year after shipment.

### Storage Buffer:

PBS with 50% Glycerol, 0.05% Proclin300, 0.5% BSA, pH 7.3.

Aliquoting is unnecessary for -20°C storage

For technical support and original validation data for this product please contact:

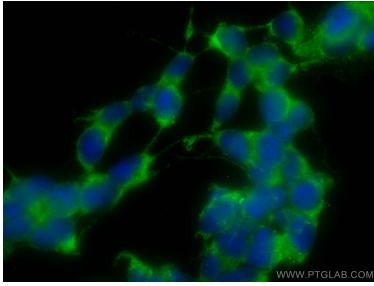
T: 1 (888) 4PTGLAB (1-888-478-4522) (toll free  
in USA), or 1(312) 455-8498 (outside USA)

E: [proteintech@ptglab.com](mailto:proteintech@ptglab.com)  
W: [ptglab.com](http://ptglab.com)

This product is exclusively available under Proteintech  
Group brand and is not available to purchase from any  
other manufacturer.

---

## Selected Validation Data



Immunofluorescent analysis of (-20°C Ethanol) fixed SH-SY5Y cells using CoraLite® Plus 488 PPP1R15B antibody (CL488-14634) at dilution of 1:200.