

For Research Use Only

CoraLite® Plus 488-conjugated CRMP2 Polyclonal antibody

Catalog Number: CL488-14686



Basic Information

Catalog Number:

CL488-14686

Size:

100ul , Concentration: 1000 ug/ml by Nanodrop;

Source:

Rabbit

Isotype:

IgG

Immunogen Catalog Number:

AG5985

GenBank Accession Number:

BC056408

GeneID (NCBI):

1808

UNIPROT ID:

Q16555

Full Name:

dihydropyrimidinase-like 2

Calculated MW:

62 kDa

Observed MW:

62-66 kDa

Purification Method:

Antigen affinity purification

Recommended Dilutions:

IF/ICC 1:50-1:500

Excitation/Emission maxima wavelengths:

493 nm / 522 nm

Applications

Tested Applications:

IF/ICC, FC (Intra)

Species Specificity:

human, mouse, rat

Positive Controls:

IF/ICC : HepG2 cells,

Background Information

Dihydropyrimidinase-like 2 (Dpysl2), a protein involved in neuronal differentiation and axonal guidance is found altered in various nervous system diseases (PMID:19524114). It is also named as CRMP2, ULIP2 and belongs to hydantoinase/dihydropyrimidinase subfamily. The phosphorylation of the particular portion carboxyl-terminal to the basic region of DPYSL2 may play an important role in regulating its activity, and may be involved in the formation of degenerating neurites in AD brain (PMID:10757975).

Storage

Storage:

Store at -20°C. Avoid exposure to light. Stable for one year after shipment.

Storage Buffer:

PBS with 50% Glycerol, 0.05% Proclin300, 0.5% BSA, pH 7.3.

Aliquoting is unnecessary for -20°C storage

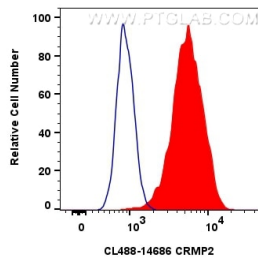
For technical support and original validation data for this product please contact:

T: 1 (888) 4PTGLAB (1-888-478-4522) (toll free in USA), or 1(312) 455-8498 (outside USA)

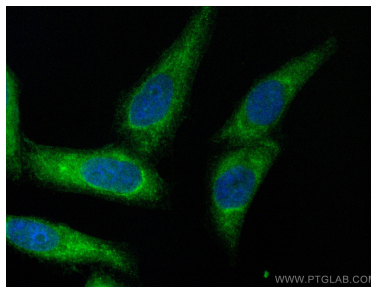
E: proteintech@ptglab.com
W: ptglab.com

This product is exclusively available under Proteintech Group brand and is not available to purchase from any other manufacturer.

Selected Validation Data



1×10^6 SH-SY5Y cells were intracellularly stained with 0.4 μ g Coralite® Plus 488 Crmp2 Polyclonal Antibody (CL488-14686)(red), or 0.4 μ g Coralite® Plus 488-conjugated Rabbit IgG control Rabbit PolyAb (CL488-30000) (blue). Cells were fixed with 4% PFA and permeabilized with Flow Cytometry Perm Buffer (PF00011-C).



Immunofluorescent analysis of (-20°C Ethanol) fixed HepG2 cells using Coralite® Plus 488 CRMP2 antibody (CL488-14686) at dilution of 1:200.