

For Research Use Only

# CoraLite® Plus 488-conjugated RNMTL1 Polyclonal antibody

Catalog Number:CL488-14707

Featured Product



## Basic Information

Catalog Number:

CL488-14707

Size:

100ul , Concentration: 1000 ug/ml by  
Nanodrop;

Source:

Rabbit

Isotype:

IgG

Immunogen Catalog Number:

AG6399

GenBank Accession Number:

BC050614

GeneID (NCBI):

55178

UNIPROT ID:

Q9HC36

Full Name:

RNA methyltransferase like 1

Calculated MW:

47 kDa

Observed MW:

47 kDa

Purification Method:

Antigen affinity purification

Recommended Dilutions:

IF/ICC 1:50-1:500

Excitation/Emission maxima  
wavelengths:

493 nm / 522 nm

## Applications

Tested Applications:

IF/ICC

Species Specificity:

human

Positive Controls:

IF/ICC : HeLa cells,

## Background Information

The RNA methyltransferase like 1 gene (RNMTL1) is one of thirteen newly discovered genes within a 116 Kb segment of the chromosome 17p13.3, which suffers from a high frequent loss of heterozygosity in human hepatocellular carcinoma. Its amino acid sequence was identified a high conserved region with methylases from various microorganisms, suggesting to have function to transfer methyl group to rRNA molecule [PMID:12296377].

## Storage

Storage:

Store at -20°C. Avoid exposure to light. Stable for one year after shipment.

Storage Buffer:

PBS with 50% Glycerol, 0.05% Proclin300, 0.5% BSA, pH 7.3.

Aliquoting is unnecessary for -20°C storage

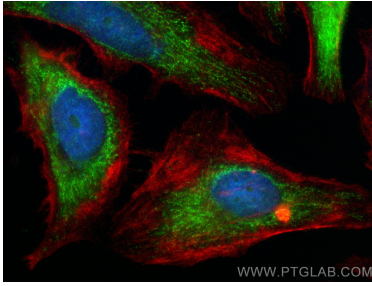
For technical support and original validation data for this product please contact:

T: 1 (888) 4PTGLAB (1-888-478-4522) (toll free  
in USA), or 1(312) 455-8498 (outside USA)

E: [proteintech@ptglab.com](mailto:proteintech@ptglab.com)  
W: [ptglab.com](http://ptglab.com)

This product is exclusively available under Proteintech Group brand and is not available to purchase from any other manufacturer.

## Selected Validation Data



Immunofluorescent analysis of (-20°C Ethanol) fixed HeLa cells using CoraLite® Plus 488 RNM1L1 antibody (CL488-14707) at dilution of 1:200, CL594-Phalloidin (red).