

For Research Use Only

CoraLite® Plus 488-conjugated SPAG5 Polyclonal antibody



Catalog Number: CL488-14726

Featured Product

Basic Information

Catalog Number: CL488-14726	GenBank Accession Number: BC000322	Purification Method: Antigen affinity purification
Size: 100ul , Concentration: 1000 µg/ml by Nanodrop;	GeneID (NCBI): 10615	Recommended Dilutions: IF 1:50-1:500
Source: Rabbit	Full Name: sperm associated antigen 5	Excitation/Emission maxima wavelengths: 488 nm / 515 nm
Isotype: IgG	Calculated MW: 134 kDa	
Immunogen Catalog Number: AG6485	Observed MW: 135 kDa, 150 kDa	

Applications

Tested Applications: FC (Intra), IF	Positive Controls: IF : HeLa cells,
Species Specificity: human, mouse	

Background Information

SPAG5, also named as MAP126, Astrin and Deepest, is necessary for normal spindle formation during mitosis. It is highly expressed in testis. SPAG5 has different localization in somatic versus male germ cells suggesting the possibility of different function. This antibody is specific to SPAG5.

Storage

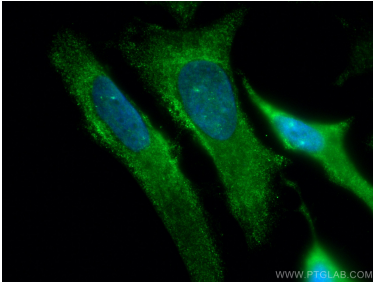
Storage:
Store at -20°C. Avoid exposure to light.
Storage Buffer:
PBS with 50% Glycerol, 0.05% Proclin300, 0.5% BSA, pH 7.3.
Aliquoting is unnecessary for -20°C storage

*** 20ul sizes contain 0.1% BSA

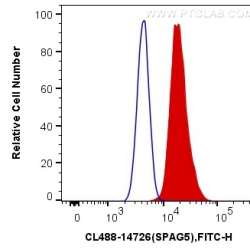
For technical support and original validation data for this product please contact:
T: 1 (888) 4PTGLAB (1-888-478-4522) (toll free in USA), or 1(312) 455-8498 (outside USA) E: proteintech@ptglab.com W: ptglab.com

This product is exclusively available under Proteintech Group brand and is not available to purchase from any other manufacturer.

Selected Validation Data



Immunofluorescent analysis of (-20°C Methanol) fixed HeLa cells using CoraLite® Plus 488 SPAG5 antibody (CL488-14726) at dilution of 1:200.



1X10⁶ HeLa cells were intracellularly stained with 0.4 ug CoraLite® Plus 488 Anti-Human SPAG5 (CL488-14726) (red), or 0.4 ug Control Antibody. Cells were fixed with 4% PFA and permeabilized with Flow Cytometry Perm Buffer (PF00011-C).