

For Research Use Only

CoraLite® Plus 488-conjugated PDHB Polyclonal antibody

Catalog Number: CL488-14744

Featured Product



Basic Information

Catalog Number:

CL488-14744

Size:

100ul, Concentration: 1000 ug/ml by Nanodrop;

Source:

Rabbit

Isotype:

IgG

Immunogen Catalog Number:

AG6442

GenBank Accession Number:

BC000439

GeneID (NCBI):

5162

UNIPROT ID:

P11177

Full Name:

pyruvate dehydrogenase (lipoamide) beta

Calculated MW:

39 kDa

Observed MW:

34 kDa

Purification Method:

Antigen affinity purification

Recommended Dilutions:

IF/ICC 1:50-1:500

Excitation/Emission maxima wavelengths:

493 nm / 522 nm

Applications

Tested Applications:

IF/ICC, FC (Intra)

Species Specificity:

human, mouse, rat

Positive Controls:

IF/ICC : HeLa cells,

Background Information

PDHB(Pyruvate dehydrogenase E1 component subunit beta, mitochondrial) is also named as PHE1B. The enzyme, which is found in mitochondria, is one of the component enzymes of the pyruvate dehydrogenase multienzyme complex (PDH). It catalyzes the first reaction of an oxidative decarboxylation sequence converting pyruvate to acetyl-CoA and CO₂(PMID:3422424). Defects in PDHB are the cause of pyruvate dehydrogenase E1-beta deficiency (PDHBD)(PMID:15138885).

Storage

Storage:

Store at -20°C. Avoid exposure to light. Stable for one year after shipment.

Storage Buffer:

PBS with 50% Glycerol, 0.05% Proclin300, 0.5% BSA, pH 7.3.

Aliquoting is unnecessary for -20°C storage

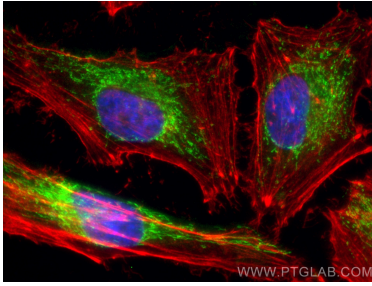
For technical support and original validation data for this product please contact:

T: 1 (888) 4PTGLAB (1-888-478-4522) (toll free in USA), or 1(312) 455-8498 (outside USA)

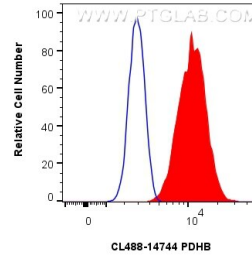
E: proteintech@ptglab.com
W: ptglab.com

This product is exclusively available under Proteintech Group brand and is not available to purchase from any other manufacturer.

Selected Validation Data



Immunofluorescent analysis of (4% PFA) fixed HeLa cells using CoraLite® Plus 488 PDHB antibody (CL488-14744) at dilution of 1:200, CL594-Phalloidin (red).



1x10⁶ HeLa cells were intracellularly stained with 0.4 ug CoraLite® Plus 488-conjugated PDHB Polyclonal antibody (CL488-14744)(red), or 0.4 ug CoraLite® Plus 488-conjugated Rabbit IgG control Rabbit PolyAb (CL488-30000) (blue). Cells were fixed with 4% PFA and permeabilized with Flow Cytometry Perm Buffer (PF00011-C).