

For Research Use Only

CoraLite® Plus 488-conjugated GIPC1 Polyclonal antibody

Catalog Number: CL488-14822

Featured Product



Basic Information

Catalog Number:

CL488-14822

Size:

100ul, Concentration: 1000 ug/ml by Nanodrop;

Source:

Rabbit

Isotype:

IgG

Immunogen Catalog Number:

AG6597

GenBank Accession Number:

BC000410

GeneID (NCBI):

10755

UNIPROT ID:

O14908

Full Name:

GIPC PDZ domain containing family, member 1

Calculated MW:

36 kDa

Observed MW:

42 kDa

Purification Method:

Antigen affinity purification

Recommended Dilutions:

IF/ICC 1:50-1:500

Excitation/Emission maxima wavelengths:

493 nm / 522 nm

Applications

Tested Applications:

IF/ICC

Species Specificity:

human, mouse, rat

Positive Controls:

IF/ICC : HepG2 cells,

Background Information

GAIP interacting protein C terminus, member 1(GIPC1), also known as PDZ domain-containing protein GIPC1, is a cytoplasmic protein that also localizes to the peripheral membrane, acting as an adaptor protein linking receptor interactions to intracellular signaling pathways, including cell cycle regulation, and expression has been associated with some cancers (PMID: 19175293, 26757732). This antibody is specific to GIPC1 with a band at 42 kDa (PMID: 18721486).

Storage

Storage:

Store at -20°C. Avoid exposure to light. Stable for one year after shipment.

Storage Buffer:

PBS with 50% Glycerol, 0.05% Proclin300, 0.5% BSA, pH 7.3.

Aliquoting is unnecessary for -20°C storage

For technical support and original validation data for this product please contact:

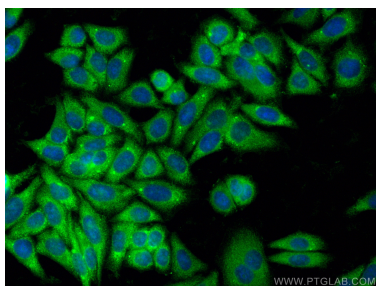
T: 1 (888) 4PTGLAB (1-888-478-4522) (toll free in USA), or 1(312) 455-8498 (outside USA)

E: proteintech@ptglab.com

W: ptglab.com

This product is exclusively available under Proteintech Group brand and is not available to purchase from any other manufacturer.

Selected Validation Data



Immunofluorescent analysis of (-20°C Ethanol) fixed HepG2 cells using CoraLite® Plus 488 GIPC1 antibody (CL488-14822) at dilution of 1:200.