

For Research Use Only

CoraLite® Plus 488-conjugated RPS27A Polyclonal antibody

Catalog Number: CL488-14946



Basic Information

Catalog Number:

CL488-14946

Size:

100ul , Concentration: 1000 ug/ml by Nanodrop;

Source:

Rabbit

Isotype:

IgG

Immunogen Catalog Number:

AG6750

GenBank Accession Number:

BC001392

GeneID (NCBI):

6233

UNIPROT ID:

P62979

Full Name:

ribosomal protein S27a

Calculated MW:

18 kDa

Observed MW:

9 kDa, 18 kDa

Purification Method:

Antigen Affinity Purified

Recommended Dilutions:

IF/ICC 1:50-1:500

Excitation/Emission maxima wavelengths:

493 nm / 522 nm

Applications

Tested Applications:

IF/ICC

Species Specificity:

human, mouse

Positive Controls:

IF/ICC : HeLa cells,

Background Information

RPS27A, also named as UBA80 and UBCEP1, can be cleaved into two chains Ubiquitin and 40S ribosomal protein S27a. Ubiquitin is a highly conserved 76-amino acid protein that plays a key role in protein degradation. Ubiquitin is synthesized as precursor proteins that consist either of polyubiquitin chains that are cleaved into moieties of the UBB or UBC types, or single ubiquitin moieties fused 5-prime to unrelated carboxyl extension proteins (UBA type) such as UBA52 and UBA80 (RPS27A) [PMID:10772958]

Storage

Storage:

Store at -20°C. Avoid exposure to light. Stable for one year after shipment.

Storage Buffer:

PBS with 50% Glycerol, 0.05% Proclin300, 0.5% BSA, pH 7.3.

Aliquoting is unnecessary for -20°C storage

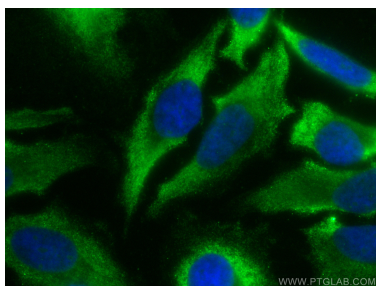
For technical support and original validation data for this product please contact:

T: 1 (888) 4PTGLAB (1-888-478-4522) (toll free in USA), or 1(312) 455-8498 (outside USA)

E: proteintech@ptglab.com
W: ptglab.com

This product is exclusively available under Proteintech Group brand and is not available to purchase from any other manufacturer.

Selected Validation Data



Immunofluorescent analysis of (-20°C Ethanol)
fixed HeLa cells using CoraLite® Plus 488 RPS27A
antibody (CL488-14946) at dilution of 1:200.