

For Research Use Only

# CoraLite® Plus 488-conjugated GSTO1 Polyclonal antibody

Catalog Number: CL488-15124

Featured Product



## Basic Information

Catalog Number:

CL488-15124

Size:

100ul, Concentration: 1000 ug/ml by Nanodrop;

Source:

Rabbit

Isotype:

IgG

Immunogen Catalog Number:

AG7199

GenBank Accession Number:

BC000127

GeneID (NCBI):

9446

UNIPROT ID:

P78417

Full Name:

glutathione S-transferase omega 1

Calculated MW:

28 kDa

Observed MW:

27-30 kDa

Purification Method:

Antigen affinity purification

Recommended Dilutions:

IF/ICC 1:50-1:500

Excitation/Emission maxima wavelengths:

493 nm / 522 nm

## Applications

Tested Applications:

IF/ICC, FC (Intra)

Species Specificity:

human, rat, mouse

Positive Controls:

IF/ICC : PC-3 cells,

## Background Information

Glutathione-S-transferase omega 1 (GSTO1) belongs to a new subfamily of GSTs and is the rate limiting enzyme for biotransformation of inorganic arsenic, environmental carcinogen. Expression of GSTO1-1 was abundant in a wide range of normal tissues, particularly liver, macrophages, glial cells, and endocrine cells. Human GSTO1 assembles as a dimer. This antibody detects both monomer (27-30 kDa) and dimer forms of GSTO1 (54-64 kDa). (PMID: 21495794)

## Storage

Storage:

Store at -20°C. Avoid exposure to light. Stable for one year after shipment.

Storage Buffer:

PBS with 50% Glycerol, 0.05% Proclin300, 0.5% BSA, pH 7.3.

Aliquoting is unnecessary for -20°C storage

For technical support and original validation data for this product please contact:

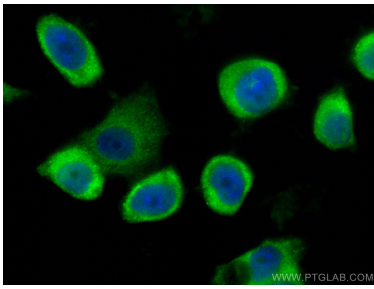
T: 1 (888) 4PTGLAB (1-888-478-4522) (toll free in USA), or 1(312) 455-8498 (outside USA)

E: [proteintech@ptglab.com](mailto:proteintech@ptglab.com)

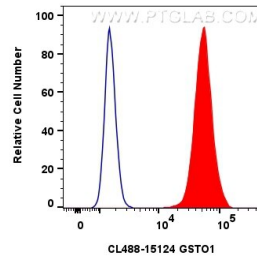
W: [ptglab.com](http://ptglab.com)

This product is exclusively available under Proteintech Group brand and is not available to purchase from any other manufacturer.

## Selected Validation Data



Immunofluorescent analysis of (-20°C Ethanol) fixed PC-3 cells using Coralite® Plus 488 GSTO1 antibody (CL488-15124) at dilution of 1:200.



1x10<sup>6</sup> PC-3 cells were intracellularly stained with 0.8 ug Coralite® Plus 488 Gsto1 Polyclonal Antibody (CL488-15124)(red), or 0.8 ug Coralite® Plus 488-conjugated Rabbit IgG control Rabbit PolyAb (CL488-30000) (blue). Cells were fixed with 4% PFA and permeabilized with Flow Cytometry Perm Buffer (PF00011-C).