

For Research Use Only

CoraLite® Plus 488-conjugated S100 Beta Polyclonal antibody



Catalog Number: CL488-15146

Basic Information

Catalog Number: CL488-15146	GenBank Accession Number: BC001766	Purification Method: Antigen affinity purification
Size: 100ul , Concentration: 1000 µg/ml by Nanodrop;	GeneID (NCBI): 6285	Recommended Dilutions: IF 1:50-1:500
Source: Rabbit	Full Name: S100 calcium binding protein B	Excitation/Emission maxima wavelengths: 493 nm / 522 nm
Isotype: IgG	Calculated MW: 11 kDa	
Immunogen Catalog Number: AG7440	Observed MW: 11 kDa	

Applications

Tested Applications: IF	Positive Controls: IF : mouse brain tissue,
Species Specificity: human, mouse, rat	

Background Information

S100B is a member of the S100 family of proteins containing 2 EF-hand calcium-binding motifs and has been implicated in the regulation of cellular activities such as metabolism, motility and proliferation. In the nervous system, S100B is constitutively released by astrocytes into the extracellular space and at nanomolar concentrations, it can promote neurite outgrowth and protect neurons against oxidative stress. Within the central nervous system (CNS), S100B is thought to be a marker for astroglial activation, linking astrocyte dysfunction to schizophrenia. In addition to astrocytes, S100B is released from many cell types, such as, adipocytes, chondrocytes, cardiomyocytes and lymphocytes. Serum S100B represents a new biomarker for mood disorders.

Storage

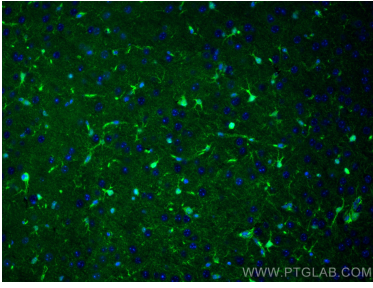
Storage:
Store at -20°C. Avoid exposure to light. Stable for one year after shipment.
Storage Buffer:
PBS with 50% Glycerol, 0.05% Proclin300, 0.5% BSA, pH 7.3.
Aliquoting is unnecessary for -20°C storage

*** 20ul sizes contain 0.1% BSA

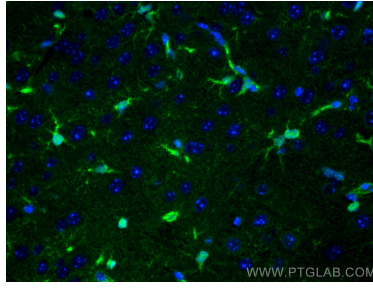
For technical support and original validation data for this product please contact:
T: 1 (888) 4PTGLAB (1-888-478-4522) (toll free in USA), or 1(312) 455-8498 (outside USA)
E: proteintech@ptglab.com
W: ptglab.com

This product is exclusively available under Proteintech Group brand and is not available to purchase from any other manufacturer.

Selected Validation Data



Immunofluorescent analysis of (4% PFA) fixed mouse brain tissue using Coralite® Plus 488 S100 Beta antibody (CL488-15146) at dilution of 1:100.



Immunofluorescent analysis of (4% PFA) fixed mouse brain tissue using Coralite® Plus 488 S100 Beta antibody (CL488-15146) at dilution of 1:100.