

For Research Use Only

CoraLite® Plus 488-conjugated RBPMS Polyclonal antibody



Catalog Number: **CL488-15187**

Basic Information

Catalog Number: CL488-15187	GenBank Accession Number: BC003608	Purification Method: Antigen affinity purification
Size: 100ul , Concentration: 1000 µg/ml by Nanodrop;	GeneID (NCBI): 11030	Recommended Dilutions: IF 1:50-1:500
Source: Rabbit	Full Name: RNA binding protein with multiple splicing	Excitation/Emission maxima wavelengths: 488 nm / 515 nm
Isotype: IgG	Calculated MW: 22 kDa	
Immunogen Catalog Number: AG7256		

Applications

Tested Applications: FC (Intra), IF	Positive Controls: IF : HepG2 cells,
Species Specificity: human, mouse, rat	

Background Information

Storage

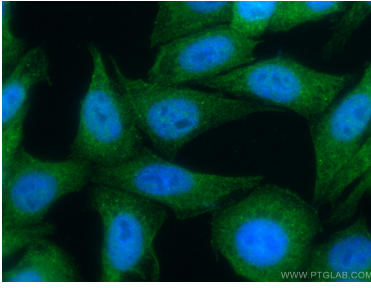
Storage:
Store at -20°C. Avoid exposure to light.
Storage Buffer:
PBS with 50% Glycerol, 0.05% Proclin300, 0.5% BSA, pH 7.3.
Aliquoting is unnecessary for -20°C storage

***** 20ul sizes contain 0.1% BSA**

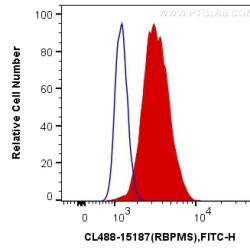
For technical support and original validation data for this product please contact:
T: 1 (888) 4PTGLAB (1-888-478-4522) (toll free in USA), or 1(312) 455-8498 (outside USA)
E: proteintech@ptglab.com
W: ptglab.com

This product is exclusively available under Proteintech Group brand and is not available to purchase from any other manufacturer.

Selected Validation Data



Immunofluorescent analysis of (4% PFA) fixed HepG2 cells using CoraLite® Plus 488 RBPMS antibody (CL488-15187) at dilution of 1:200.



1X10⁶ HeLa cells were intracellularly stained with 0.4 ug CoraLite® Plus 488 Anti-Human RBPMS (CL488-15187) (red), or 0.4 ug Control Antibody. Cells were fixed and permeabilized with Transcription Factor Staining Buffer Kit (PF00011).