

For Research Use Only

CoraLite® Plus 488-conjugated HLA class I ABC Polyclonal antibody



Catalog Number: CL488-15240

Basic Information

Catalog Number: CL488-15240	GenBank Accession Number: BC003069	Purification Method: Antigen affinity purification
Size: 100ul , Concentration: 1000 µg/ml by Nanodrop;	GeneID (NCBI): 3105	Recommended Dilutions: IF 1:50-1:500
Source: Rabbit	Full Name: major histocompatibility complex, class I, A	Excitation/Emission maximum wavelengths: 488 nm / 515 nm
Isotype: IgG	Calculated MW: 41 kDa	
Immunogen Catalog Number: AG7370	Observed MW: 44 kDa	

Applications

Tested Applications: FC, IF	Positive Controls: IF : HepG2 cells,
Species Specificity: human	

Background Information

Human major histocompatibility complex (MHC) antigens, also referred to as human leukocyte antigens (HLA), are encoded by genes located on the short arm of chromosome 6 (6p21.3). There are two classes of HLA antigens: class I (HLA-A, B and C) and class II (HLA-D). This class I molecules are polymorphic membrane glycoproteins composed of a heavy (alpha) chain (44 kDa) which is encoded by a HLA class I gene (HLA-A, B or C), and β 2-microglobulin light (beta) chain (12 kDa). They are involved in the presentation of foreign antigens to the immune system. (PMID: 667938; 3375250)

Storage

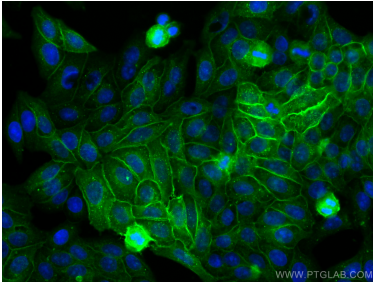
Storage:
Store at -20°C. Avoid exposure to light.
Storage Buffer:
PBS with 50% Glycerol, 0.05% Proclin300, 0.5% BSA, pH 7.3.
Aliquoting is unnecessary for -20°C storage

*** 20ul sizes contain 0.1% BSA

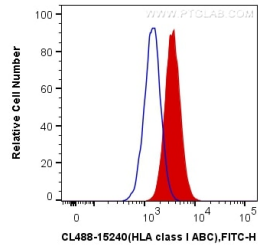
For technical support and original validation data for this product please contact:
T: 1 (888) 4PTGLAB (1-888-478-4522) (toll free in USA), or 1(312) 455-8498 (outside USA)
E: proteintech@ptglab.com
W: ptglab.com

This product is exclusively available under Proteintech Group brand and is not available to purchase from any other manufacturer.

Selected Validation Data



Immunofluorescent analysis of (-20°C Methanol) fixed HepG2 cells using CoraLite® Plus 488 HLA class I ABC antibody (CL488-15240) at dilution of 1:200.



1X10⁶ HepG2 cells were surface stained with 0.4 ug CoraLite® Plus 488 Anti-Human HLA class I ABC (CL488-15240) (red), or 0.4 ug Control Antibody. Cells were not fixed.