

For Research Use Only

CoraLite® Plus 488-conjugated MYL9 Polyclonal antibody



Catalog Number: CL488-15354

Featured Product

Basic Information

Catalog Number: CL488-15354	GenBank Accession Number: BC002648	Purification Method: Antigen affinity purification
Size: 100ul , Concentration: 1000 µg/ml by Nanodrop;	GeneID (NCBI): 10398	Recommended Dilutions: IF 1:50-1:500
Source: Rabbit	Full Name: myosin, light chain 9, regulatory	Excitation/Emission maxima wavelengths: 493 nm / 522 nm
Isotype: IgG	Calculated MW: 20 kDa	
Immunogen Catalog Number: AG7600	Observed MW: 20 kDa	

Applications

Tested Applications: IF	Positive Controls: IF : MCF-7 cells,
Species Specificity: human	

Background Information

Myosin regulatory light polypeptide 9 (MYL9), also known as MLC2, belongs to the myosin regulatory subunits. It plays an important role in regulation of both smooth muscle and nonmuscle cell contractile activity via its phosphorylation at Thr19 and Ser20. Implicated in cytokinesis, receptor capping, and cell locomotion (PMID:11942626, PMID:2526655). Some studies have demonstrated that MYL9 may play important roles in various human cancers. The expression and phosphorylation of MYL9 (Thr19/Ser20) may be increased in human breast (PMID: 22144583) and liver cancers (PMID: 18648664), while decreased in human colon (PMID: 22752057) and bladder cancers (PMID: 21139803). MYL9 was the only gene differentially expressed in the aged versus young injured arteries in the rat smooth muscle cell layers (PMID:22003410).

Storage

Storage:
Store at -20°C. Avoid exposure to light. Stable for one year after shipment.
Storage Buffer:
PBS with 50% Glycerol, 0.05% Proclin300, 0.5% BSA, pH 7.3.
Aliquoting is unnecessary for -20°C storage

*** 20ul sizes contain 0.1% BSA

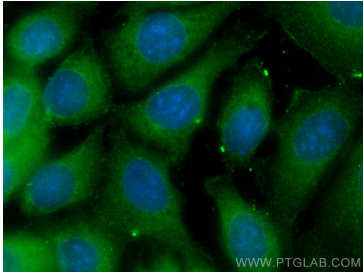
For technical support and original validation data for this product please contact:

T: 1 (888) 4PTGLAB (1-888-478-4522) (toll free
in USA), or 1(312) 455-8498 (outside USA)

E: proteintech@ptglab.com
W: ptglab.com

This product is exclusively available under Proteintech Group brand and is not available to purchase from any other manufacturer.

Selected Validation Data



Immunofluorescent analysis of (-20°C Methanol) fixed MCF-7 cells using CoraLite® Plus 488 MYL9 antibody (CL488-15354) at dilution of 1:100.