

For Research Use Only

# CoraLite® Plus 488-conjugated BDH1 Polyclonal antibody



Catalog Number: CL488-15417

Featured Product

## Basic Information

<b>Catalog Number:</b> CL488-15417	<b>GenBank Accession Number:</b> BC005844	<b>Purification Method:</b> Antigen affinity purification
<b>Size:</b> 100ul , Concentration: 1000 µg/ml by Nanodrop;	<b>GeneID (NCBI):</b> 622	<b>Excitation/Emission maxima wavelengths:</b> 493 nm / 522 nm
<b>Source:</b> Rabbit	<b>Full Name:</b> 3-hydroxybutyrate dehydrogenase, type 1	
<b>Isotype:</b> IgG	<b>Calculated MW:</b> 38 kDa	
<b>Immunogen Catalog Number:</b> AG7705	<b>Observed MW:</b> 31 kDa	

## Applications

**Tested Applications:**  
FC (Intra)

**Species Specificity:**  
human, mouse, rat

## Background Information

BDH1 (3-hydroxybutyrate dehydrogenase, type 1) is a 343 amino acid protein that localizes to the mitochondrial matrix and belongs to the short-chain dehydrogenases/reductases (SDR) family. The deduced 343 amino acid protein contains a 46 residue leader peptide, which is cleaved to produce the mature form. It is a lipid-requiring mitochondrial enzyme with a specific requirement of phosphatidylcholine (PC).

## Storage

**Storage:**  
Store at -20°C. Avoid exposure to light. Stable for one year after shipment.  
**Storage Buffer:**  
PBS with 50% Glycerol, 0.05% Proclin300, 0.5% BSA, pH 7.3.  
Aliquoting is unnecessary for -20°C storage

\*\*\* 20ul sizes contain 0.1% BSA

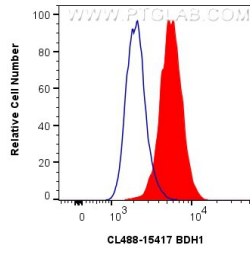
For technical support and original validation data for this product please contact:

T: 1 (888) 4PTGLAB (1-888-478-4522) (toll free  
in USA), or 1(312) 455-8498 (outside USA)

E: [proteintech@ptglab.com](mailto:proteintech@ptglab.com)  
W: [ptglab.com](http://ptglab.com)

This product is exclusively available under Proteintech Group brand and is not available to purchase from any other manufacturer.

## Selected Validation Data



1X10<sup>6</sup> HepG2 cells were intracellularly stained with 0.8 ug CoraLite® Plus 488 Anti-Human BDH1 (CL488-15417) (red), or 0.8 ug CoraLite® Plus 488-conjugated Rabbit IgG control Rabbit PolyAb (CL488-30000, Clone: ) (blue). Cells were fixed with 4% PFA and permeabilized with Flow Cytometry Perm Buffer (PF00011-C).