

For Research Use Only

# CoraLite® Plus 488-conjugated LONP1 Polyclonal antibody



Catalog Number: CL488-15440

Featured Product

## Basic Information

<b>Catalog Number:</b> CL488-15440	<b>GenBank Accession Number:</b> BC000235	<b>Purification Method:</b> Antigen affinity purification
<b>Size:</b> 100ul , Concentration: 1000 µg/ml by Nanodrop;	<b>GeneID (NCBI):</b> 9361	<b>Recommended Dilutions:</b> IF 1:50-1:500
<b>Source:</b> Rabbit	<b>Full Name:</b> Lon peptidase 1, mitochondrial	<b>Excitation/Emission maxima wavelengths:</b> 488 nm / 515 nm
<b>Isotype:</b> IgG	<b>Calculated MW:</b> 106 kDa	
<b>Immunogen Catalog Number:</b> AG7196	<b>Observed MW:</b> 100 kDa	

## Applications

<b>Tested Applications:</b> IF	<b>Positive Controls:</b> IF : HepG2 cells,
<b>Species Specificity:</b> human, mouse, rat	

## Background Information

LONP1(Lon protease homolog, mitochondrial) is also named as LONP, LONHS, HLON, LON, PRSS15, PIM1, MGC1498 and belongs to the peptidase S16 family. It seems to play a major role in the elimination of oxidatively modified proteins in the mitochondrial matrix(PMID:18021745). LONP1, also a nuclearly encoded and mitochondrially located stress-responsive protease, is involved in heme-mediated ALAS-1 turnover(PMID:21659532). It recognizes specific surface determinants or folds, initiates proteolysis at solvent-accessible sites, and generates unfolded polypeptides that are then progressively degraded(PMID:15870080). LONP1 has some isoforms with the MW of 106 kDa, 100 kDa and 86 kDa.

## Storage

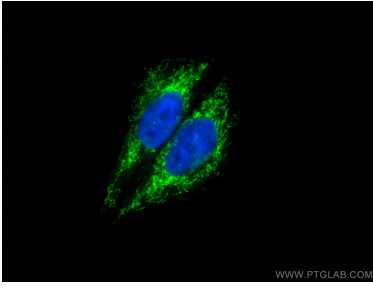
**Storage:**  
Store at -20°C. Avoid exposure to light.  
**Storage Buffer:**  
PBS with 50% Glycerol, 0.05% Proclin300, 0.5% BSA, pH 7.3.  
Aliquoting is unnecessary for -20°C storage

\*\*\* 20ul sizes contain 0.1% BSA

For technical support and original validation data for this product please contact:  
T: 1 (888) 4PTGLAB (1-888-478-4522) (toll free in USA), or 1(312) 455-8498 (outside USA)  
E: proteintech@ptglab.com  
W: ptglab.com

This product is exclusively available under Proteintech Group brand and is not available to purchase from any other manufacturer.

## Selected Validation Data



Immunofluorescent analysis of (4% PFA) fixed HepG2 cells using CoraLite® Plus 488 LONP1 antibody (CL488-15440) at dilution of 1:200.