

For Research Use Only

CoraLite® Plus 488-conjugated PPM1G Polyclonal antibody



Catalog Number: CL488-15532

Featured Product

Basic Information

Catalog Number:

CL488-15532

Size:

100ul, Concentration: 1000 µg/ml by Nanodrop;

Source:

Rabbit

Isotype:

IgG

Immunogen Catalog Number:

AG7751

GenBank Accession Number:

BC000057

GeneID (NCBI):

5496

UNIPROT ID:

O15355

Full Name:

protein phosphatase 1G (formerly 2C), magnesium-dependent, gamma isoform

Calculated MW:

59 kDa

Observed MW:

70 kDa

Purification Method:

Antigen affinity purification

Recommended Dilutions:

IF 1:50-1:500

Excitation/Emission maxima wavelengths:

493 nm / 522 nm

Applications

Tested Applications:

FC (Intra), IF

Species Specificity:

human, mouse, rat

Positive Controls:

IF : MCF-7 cells,

Background Information

PPM1G, also known as PP2C γ and PP2C ζ , is an important member of the PP2C family of serine/threonine protein phosphatases and has an important role in controlling cell cycle progression. PPM1G restricts innate immune signaling mediated by STING and MAVS and is hijacked by KSHV for immune evasion (PMID: 33219031). In addition, PPM1G promotes the progression of hepatocellular carcinoma via phosphorylation regulation of alternative splicing protein SRSF3 (PMID: 34290239).

Storage

Storage:

Store at -20°C. Avoid exposure to light. Stable for one year after shipment.

Storage Buffer:

PBS with 50% Glycerol, 0.05% Proclin300, 0.5% BSA, pH 7.3.

Aliquoting is unnecessary for -20°C storage

*** 20ul sizes contain 0.1% BSA

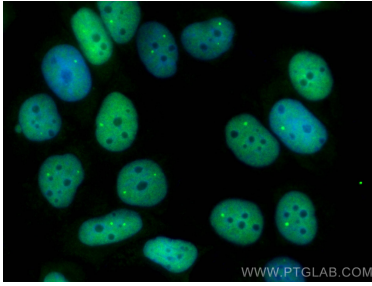
For technical support and original validation data for this product please contact:

T: 1 (888) 4PTGLAB (1-888-478-4522) (toll free in USA), or 1(312) 455-8498 (outside USA)

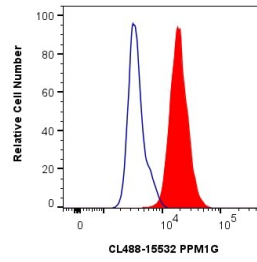
E: proteintech@ptglab.com
W: ptglab.com

This product is exclusively available under Proteintech Group brand and is not available to purchase from any other manufacturer.

Selected Validation Data



Immunofluorescent analysis of (4% PFA) fixed MCF-7 cells using CoraLite® Plus 488 PPM1G antibody (CL488-15532) at dilution of 1:200.



1×10^6 MCF-7 cells were intracellularly stained with 0.8 ug CoraLite® Plus 488 Anti-Human PPM1G (CL488-15532) (red), or 0.8 ug CoraLite® Plus 488-conjugated Rabbit IgG control Rabbit PolyAb (CL488-30000, Clone:) (blue). Cells were fixed and permeabilized with True-Nuclear Transcription Factor Buffer Set.