

For Research Use Only

CoraLite® Plus 488-conjugated Cytokeratin 7 Polyclonal antibody

Catalog Number:CL488-15539



Basic Information

Catalog Number: CL488-15539	GenBank Accession Number: BC002700	Purification Method: Antigen affinity purification
Size: 100ul , Concentration: 1000 ug/ml by Nanodrop;	GeneID (NCBI): 3855	Recommended Dilutions: IF-P 1:200-1:800 IF/ICC 1:50-1:500
Source: Rabbit	UNIPROT ID: P08729	Excitation/Emission maxima wavelengths: 493 nm / 522 nm
Isotype: IgG	Full Name: keratin 7	
Immunogen Catalog Number: AG7895	Calculated MW: 469 aa, 51 kDa	
	Observed MW: 51 kDa	

Applications

Tested Applications: IF/ICC, IF-P, FC (Intra)	Positive Controls:
Species Specificity: human, mouse, rat	IF-P : human breast cancer tissue, IF/ICC : HeLa cells,

Background Information

Keratins are a large family of proteins that form the intermediate filament cytoskeleton of epithelial cells, which are classified into two major sequence types. Type I keratins are a group of acidic intermediate filament proteins, including K9-K23, and the hair keratins Ha1-Ha8. Type II keratins are the basic or neutral counterparts to the acidic type I keratins, including K1-K8, and the hair keratins, Hb1-Hb6. KRT7 is a type II keratin. It is specifically expressed in the simple epithelia lining the cavities of the internal organs and in the gland ducts and blood vessels.

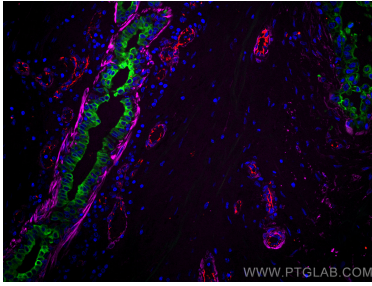
Storage

Storage:
Store at -20°C. Avoid exposure to light. Stable for one year after shipment.
Storage Buffer:
PBS with 50% Glycerol, 0.05% Proclin300, 0.5% BSA, pH 7.3.
Aliquoting is unnecessary for -20°C storage

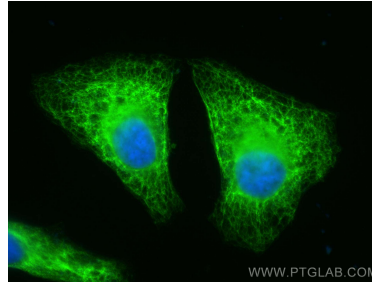
For technical support and original validation data for this product please contact:
T: 1 (888) 4PTGLAB (1-888-478-4522) (toll free in USA), or 1(312) 455-8498 (outside USA)
E: proteintech@ptglab.com
W: ptglab.com

This product is exclusively available under Proteintech Group brand and is not available to purchase from any other manufacturer.

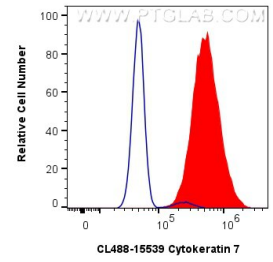
Selected Validation Data



Immunofluorescent analysis of (4% PFA) fixed human breast cancer tissue using CoraLite® Plus 488 Cytokeratin 7 antibody (CL488-15539) at dilution of 1:400, CoraLite® Plus 647 smooth muscle actin specific antibody (CL647-67735, Clone: 1E9A11, red), CoraLite® 594 CD31 antibody (CL594-11265, red).



Immunofluorescent analysis of (-20°C Methanol) fixed HeLa cells using CoraLite® Plus 488 Cytokeratin 7 antibody (CL488-15539) at dilution of 1:200.



(blue) 1×10^6 HeLa cells were intracellularly stained with 0.8 ug CoraLite® Plus 488 Anti-Human Cytokeratin 7 (CL488-15539)(red), or 0.8 ug Isotype Control. Cells were fixed with 4% PFA and permeabilized with Flow Cytometry Perm Buffer (PF00011-C).