

For Research Use Only

# CoraLite® Plus 488-conjugated HSDL2 Polyclonal antibody

Catalog Number: CL488-15631

Featured Product



## Basic Information

Catalog Number:

CL488-15631

Size:

100ul , Concentration: 1000 ug/ml by Nanodrop;

Source:

Rabbit

Isotype:

IgG

Immunogen Catalog Number:

AG7987

GenBank Accession Number:

BC004331

GeneID (NCBI):

84263

UNIPROT ID:

Q6YN16

Full Name:

hydroxysteroid dehydrogenase like 2

Calculated MW:

45 kDa

Observed MW:

45 kDa

Purification Method:

Antigen affinity purification

Recommended Dilutions:

IF/ICC 1:50-1:500

Excitation/Emission maxima wavelengths:

493 nm / 522 nm

## Applications

Tested Applications:

IF/ICC

Species Specificity:

human, mouse, rat

Positive Controls:

IF/ICC : HeLa cells,

## Background Information

Human hydroxysteroid dehydrogenase-like 2 (HSDL2) is a characterized SDR gene that not only catalyses the oxidation and reduction of multiple substrates but also regulates different metabolic and signalling pathways. Accumulating evidences suggest that HSDL2 play an important role in cancer progression. HSDL2 has promoting effects on tumor progression in papillary thyroid cancer, bladder cancer, ovarian cancer, and glioma, but has suppressing effects in cholangiocarcinoma . ( PMID: 31372054, PMID: 32211805)

## Storage

Storage:

Store at -20°C. Avoid exposure to light. Stable for one year after shipment.

Storage Buffer:

PBS with 50% Glycerol, 0.05% Proclin300, 0.5% BSA, pH 7.3.

Aliquoting is unnecessary for -20°C storage

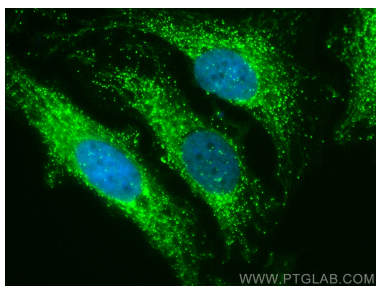
For technical support and original validation data for this product please contact:

T: 1 (888) 4PTGLAB (1-888-478-4522) (toll free in USA), or 1(312) 455-8498 (outside USA)

E: [proteintech@ptglab.com](mailto:proteintech@ptglab.com)  
W: [ptglab.com](http://ptglab.com)

This product is exclusively available under Proteintech Group brand and is not available to purchase from any other manufacturer.

## Selected Validation Data



Immunofluorescent analysis of (4% PFA) fixed HeLa cells using CoraLite® Plus 488 HSDL2 antibody (CL488-15631) at dilution of 1:200.