

For Research Use Only

CoraLite® Plus 488-conjugated Islet 1 Polyclonal antibody



Catalog Number: CL488-15661

Basic Information

Catalog Number: CL488-15661	GenBank Accession Number: BC031213	Purification Method: Antigen affinity purification
Size: 100ul , Concentration: 1000 µg/ml by Nanodrop;	GeneID (NCBI): 3670	Excitation/Emission maxima wavelengths: 493 nm / 522 nm
Source: Rabbit	UNIPROT ID: P61371	
Isotype: IgG	Full Name: ISL LIM homeobox 1	
Immunogen Catalog Number: AG8088	Calculated MW: 39 kDa	
	Observed MW: 39-45 kDa	

Applications

Tested Applications:
FC (Intra)

Species Specificity:
human

Background Information

ISL1 belongs to the LIM homeodomain transcription factor family that binds to the enhancer region of the INS gene. It plays a pivotal role in cardiogenesis, and lacking ISL1 expression results in growth arrest or displays profound defects in heart development, including atria, ventricle, and the inflow and outflow tracts.

Storage

Storage:
Store at -20°C. Avoid exposure to light. Stable for one year after shipment.

Storage Buffer:
PBS with 50% Glycerol, 0.05% Proclin300, 0.5% BSA, pH 7.3.

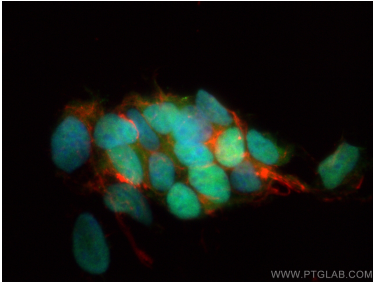
Aliquoting is unnecessary for -20°C storage

*** 20ul sizes contain 0.1% BSA

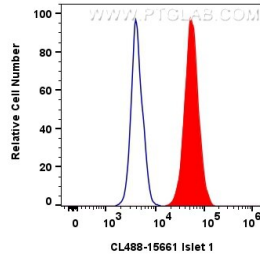
For technical support and original validation data for this product please contact:
T: 1 (888) 4PTGLAB (1-888-478-4522) (toll free in USA), or 1(312) 455-8498 (outside USA) E: proteintech@ptglab.com
W: ptglab.com

This product is exclusively available under Proteintech Group brand and is not available to purchase from any other manufacturer.

Selected Validation Data



Immunofluorescent analysis of (4% PFA) fixed SH-SY5Y cells using Coralite® Plus 488 Islet 1 antibody (CL488-15661) at dilution of 1:200, CL594-Phalloidin (red).



1x10⁶ SH-SY5Y cells were intracellularly stained with 0.8 ug Coralite® Plus 488 Anti-Human Islet 1 (CL488-15661) (red), or 0.8 ug Coralite® Plus 488-conjugated Rabbit IgG control Rabbit PolyAb (CL488-30000, Clone:) (blue). Cells were fixed and permeabilized with True-Nuclear Transcription Factor Buffer Set.