

For Research Use Only

# CoraLite® Plus 488-conjugated TRIM14 Polyclonal antibody

Catalog Number: CL488-15742

Featured Product



## Basic Information

Catalog Number:

CL488-15742

Size:

100ul , Concentration: 1000 ug/ml by Nanodrop;

Source:

Rabbit

Isotype:

IgG

Immunogen Catalog Number:

AG8158

GenBank Accession Number:

BC006333

GeneID (NCBI):

9830

UNIPROT ID:

Q14142

Full Name:

tripartite motif-containing 14

Calculated MW:

442 aa, 50 kDa

Observed MW:

50 kDa

Purification Method:

Antigen affinity purification

Recommended Dilutions:

IF/ICC 1:50-1:500

Excitation/Emission maxima wavelengths:

493 nm / 522 nm

## Applications

Tested Applications:

IF/ICC, FC (Intra)

Species Specificity:

human

Positive Controls:

IF/ICC : HeLa cells,

## Background Information

Tripartite motif-containing 14 (TRIM14) belongs to the TRIM protein family that contains 3 zinc-binding domains, a RING, a B-box type1 and a B-box type2 and plays key roles in cellular proliferation, differentiation, development, transformation, and immune response mechanisms. TRIM4 inhibits the transcriptional activity of SPI1 in a dose-dependent manner. It may participate in the early stages of differentiation of embryonic stem cells, leading to the formation of embryoid bodies.

## Storage

Storage:

Store at -20°C. Avoid exposure to light. Stable for one year after shipment.

Storage Buffer:

PBS with 50% Glycerol, 0.05% Proclin300, 0.5% BSA, pH 7.3.

Aliquoting is unnecessary for -20°C storage

For technical support and original validation data for this product please contact:

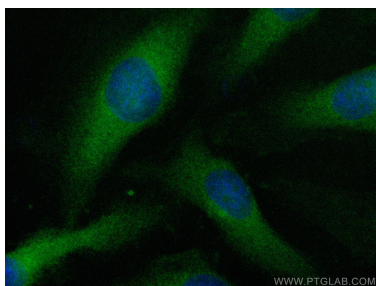
T: 1 (888) 4PTGLAB (1-888-478-4522) (toll free in USA), or 1(312) 455-8498 (outside USA)

E: [proteintech@ptglab.com](mailto:proteintech@ptglab.com)

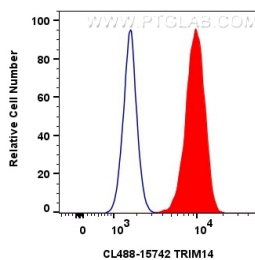
W: [ptglab.com](http://ptglab.com)

This product is exclusively available under Proteintech Group brand and is not available to purchase from any other manufacturer.

## Selected Validation Data



Immunofluorescent analysis of (-20°C Methanol) fixed HeLa cells using Coralite® Plus 488 TRIM14 antibody (CL488-15742) at dilution of 1:200.



1x10<sup>6</sup> HeLa cells were intracellularly stained with 0.8 ug Coralite® Plus 488 Trim14 Polyclonal Antibody (CL488-15742)(red), or 0.8 ug Coralite® Plus 488-conjugated Rabbit IgG control Rabbit PolyAb (CL488-30000) (blue). Cells were fixed with 4% PFA and permeabilized with Flow Cytometry Perm Buffer (PF00011-C).