

For Research Use Only

# CoraLite® Plus 488-conjugated Glycophorin A Polyclonal antibody

Catalog Number: CL488-15874



## Basic Information

### Catalog Number:

CL488-15874

### Size:

100ul , Concentration: 1000 ug/ml by Nanodrop;

### Source:

Rabbit

### Isotype:

IgG

### Immunogen Catalog Number:

AG8635

### GenBank Accession Number:

BC005319

### GeneID (NCBI):

2993

### UNIPROT ID:

P02724

### Full Name:

glycophorin A (MNS blood group)

### Calculated MW:

150 aa, 16 kDa

### Observed MW:

36-38 kDa

### Purification Method:

Antigen affinity purification

### Recommended Dilutions:

IF-P 1:50-1:500

### Excitation/Emission maxima wavelengths:

493 nm / 522 nm

## Applications

### Tested Applications:

IF-P

### Species Specificity:

human

### Positive Controls:

IF-P : human placenta tissue,

## Background Information

Glycophorin A (GYPA) is the major transmembrane sialoglycoprotein in erythrocytes. It is a dimeric type I transmembrane protein carrying 15 closely clustered O-linked tetrasaccharides capped with sialic acid/N-acetylneuraminic acid (Neu5Ac). This 36 kDa protein represents the major sialoglycoprotein of the red blood cell membrane displaying about one million copies per cell. (PMID: 9490702)

## Storage

### Storage:

Store at -20°C. Avoid exposure to light. Stable for one year after shipment.

### Storage Buffer:

PBS with 50% Glycerol, 0.05% Proclin300, 0.5% BSA, pH 7.3.

Aliquoting is unnecessary for -20°C storage

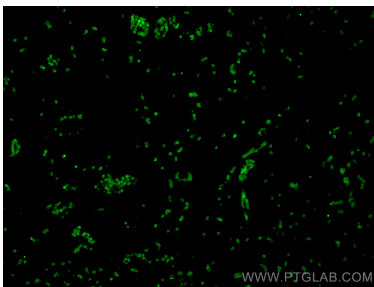
For technical support and original validation data for this product please contact:

T: 1 (888) 4PTGLAB (1-888-478-4522) (toll free in USA), or 1(312) 455-8498 (outside USA)

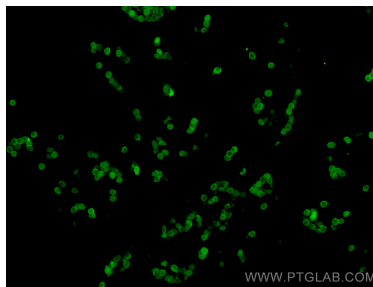
E: [proteintech@ptglab.com](mailto:proteintech@ptglab.com)  
W: [ptglab.com](http://ptglab.com)

This product is exclusively available under Proteintech Group brand and is not available to purchase from any other manufacturer.

## Selected Validation Data



Immunofluorescent analysis of (4% PFA) fixed paraffin-embedded human placenta tissue using CoraLite® Plus 488 Glycophorin A antibody (CL488-15874) at dilution of 1:200. Heat mediated antigen retrieval with Tris-EDTA buffer (pH 9.0).



Immunofluorescent analysis of (4% PFA) fixed paraffin-embedded human placenta tissue using CoraLite® Plus 488 Glycophorin A antibody (CL488-15874) at dilution of 1:200. Heat mediated antigen retrieval with Tris-EDTA buffer (pH 9.0).