

For Research Use Only

# CoraLite® Plus 488-conjugated TNFAIP8L2 Polyclonal antibody

Catalog Number: CL488-15940

Featured Product



## Basic Information

### Catalog Number:

CL488-15940

### Size:

100ul , Concentration: 1000 ug/ml by  
Nanodrop;

### Source:

Rabbit

### Isotype:

IgG

### Immunogen Catalog Number:

AG7964

### GenBank Accession Number:

BC063014

### GeneID (NCBI):

79626

### UNIPROT ID:

Q6P589

### Full Name:

tumor necrosis factor, alpha-induced  
protein 8-like 2

### Calculated MW:

184 aa, 21 kDa

### Observed MW:

18-20 kDa

### Purification Method:

Antigen affinity purification

### Recommended Dilutions:

IF/ICC 1:50-1:500

### Excitation/Emission maxima wavelengths:

493 nm / 522 nm

## Applications

### Tested Applications:

IF/ICC, FC (Intra)

### Species Specificity:

human, mouse, rat

### Positive Controls:

IF/ICC : RAW 264.7 cells,

## Background Information

TIPE2 (TNF- $\alpha$ -inducible protein 8-like 2, or TNFAIP8L2), a negative immune regulator, is essential for maintaining immune homeostasis. TIPE2 shares considerable sequence homology with members of the tumor necrosis factor- $\alpha$ -inducible protein 8 (TNFAIP8) family, which are thought to regulate cellular and immune homeostasis. TIPE2 acts as a negative regulator of Toll-like receptor and T-cell receptor function and is preferentially expressed in lymphoid tissues. TIPE2 plays an essential role for a signal transduction pathway that links inflammatory immune response to specific conditions after cerebral ischemia

## Storage

### Storage:

Store at -20°C. Avoid exposure to light. Stable for one year after shipment.

### Storage Buffer:

PBS with 50% Glycerol, 0.05% Proclin300, 0.5% BSA, pH 7.3.

Aliquoting is unnecessary for -20°C storage

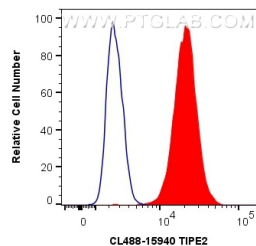
For technical support and original validation data for this product please contact:

T: 1 (888) 4PTGLAB (1-888-478-4522) (toll free  
in USA), or 1(312) 455-8498 (outside USA)

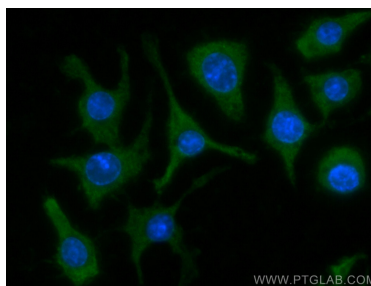
E: [proteintech@ptglab.com](mailto:proteintech@ptglab.com)  
W: [ptglab.com](http://ptglab.com)

This product is exclusively available under Proteintech Group brand and is not available to purchase from any other manufacturer.

## Selected Validation Data



1X10<sup>6</sup> THP-1 cells were intracellularly stained with 0.4  $\mu$ g CoraLite® Plus 488 Anti-Human TIPE2 (CL488-15940) (red), or 0.4  $\mu$ g Isotype Control. Cells were fixed with 4% PFA and permeabilized with Flow Cytometry Perm Buffer (PF00011-C).



Immunofluorescent analysis of (-20°C Ethanol) fixed RAW 264.7 cells using CoraLite® Plus 488 TIPE2 antibody (CL488-15940) at dilution of 1:200.