

For Research Use Only

CoraLite® Plus 488-conjugated LETM1 Polyclonal antibody

Catalog Number: CL488-16024

Featured Product



Basic Information

Catalog Number:

CL488-16024

Size:

100ul , Concentration: 1000 ug/ml by Nanodrop;

Source:

Rabbit

Isotype:

IgG

Immunogen Catalog Number:

AG8861

GenBank Accession Number:

BC021208

GeneID (NCBI):

3954

UNIPROT ID:

O95202

Full Name:

leucine zipper-EF-hand containing transmembrane protein 1

Calculated MW:

739 aa, 83 kDa

Observed MW:

83 kDa

Purification Method:

Antigen affinity purification

Recommended Dilutions:

IF/ICC 1:400-1:1600

Excitation/Emission maxima wavelengths:

493 nm / 522 nm

Applications

Tested Applications:

IF/ICC

Species Specificity:

human

Positive Controls:

IF/ICC : HeLa cells,

Background Information

LETM1 is a mitochondrial inner membrane protein. It functions to maintain the mitochondrial tubular shapes and is required for normal mitochondrial morphology and cellular viability. It served as an anchor protein for complex formation between mitochondria and ribosome, and regulated mitochondrial biogenesis. It was also identified in Wolf-Hirschhorn syndrome, and was deleted in nearly all patients with the syndrome. A recent study determined that adenovirus-mediated LETM1 may provide a useful target for designing lung tumor prevention and treatment.

Storage

Storage:

Store at -20°C. Avoid exposure to light. Stable for one year after shipment.

Storage Buffer:

PBS with 50% Glycerol, 0.05% Proclin300, 0.5% BSA, pH 7.3.

Aliquoting is unnecessary for -20°C storage

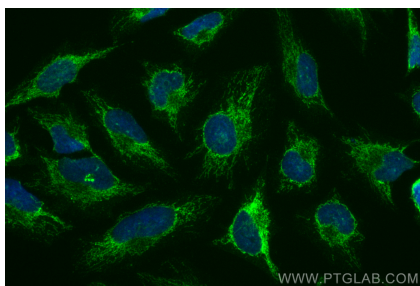
For technical support and original validation data for this product please contact:

T: 1 (888) 4PTGLAB (1-888-478-4522) (toll free in USA), or 1(312) 455-8498 (outside USA)

E: proteintech@ptglab.com
W: ptglab.com

This product is exclusively available under Proteintech Group brand and is not available to purchase from any other manufacturer.

Selected Validation Data



Immunofluorescent analysis of (4% PFA) fixed HeLa cells using Coralite® Plus 488 LETM1 antibody (CL488-16024) at dilution of 1:800.