

For Research Use Only

# CoraLite® Plus 488-conjugated Osteocalcin Polyclonal antibody



Catalog Number: **CL488-16157**

## Basic Information

<b>Catalog Number:</b> CL488-16157	<b>GenBank Accession Number:</b> NM_199173	<b>Purification Method:</b> Antigen affinity purification
<b>Size:</b> 100ul , Concentration: 1000 µg/ml by Nanodrop;	<b>GeneID (NCBI):</b> 632	<b>Recommended Dilutions:</b> IF 1:50-1:500
<b>Source:</b> Rabbit	<b>UNIPROT ID:</b> P02818	<b>Excitation/Emission maxima wavelengths:</b> 493 nm / 522 nm
<b>Isotype:</b> IgG	<b>Full Name:</b> bone gamma-carboxyglutamate (gla) protein	
	<b>Calculated MW:</b> 11 kDa	

## Applications

<b>Tested Applications:</b> IF	<b>Positive Controls:</b> IF : NIH/3T3 cells,
<b>Species Specificity:</b> human, mouse, rat	

## Storage

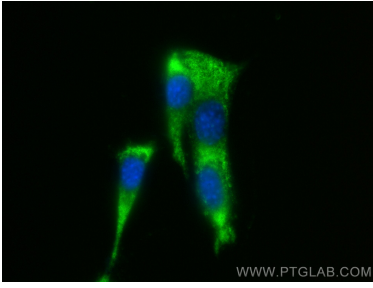
**Storage:**  
Store at -20°C. Avoid exposure to light. Stable for one year after shipment.  
**Storage Buffer:**  
PBS with 50% Glycerol, 0.05% Proclin300, 0.5% BSA, pH 7.3.  
Aliquoting is unnecessary for -20°C storage

**\*\*\* 20ul sizes contain 0.1% BSA**

For technical support and original validation data for this product please contact:  
T: 1 (888) 4PTGLAB (1-888-478-4522) (toll free in USA), or 1(312) 455-8498 (outside USA)      E: [proteintech@ptglab.com](mailto:proteintech@ptglab.com)  
W: [ptglab.com](http://ptglab.com)

**This product is exclusively available under Proteintech Group brand and is not available to purchase from any other manufacturer.**

## Selected Validation Data



Immunofluorescent analysis of (-20°C Ethanol)  
fixed NIH/3T3 cells using CoraLite® Plus 488  
Osteocalcin antibody (CL488-16157) at dilution of  
1:200.